



TRANSPORTATION CABINET

Frankfort, Kentucky 40622
www.transportation.ky.gov/

Steven L. Beshear
Governor

Michael W. Hancock, P.E.
Secretary

March 17, 2015

CALL NO. 100
CONTRACT ID NO. 151001
ADDENDUM # 1

Subject: Mercer County, STP BRZ 0703 (325)
Letting March 20, 2015

- (1) Revised - Plan Sheets - R1, R2, R2A, R4, X3 & X4
- (2) Added - Plan Sheets - R7G & R7H
- (3) Revised - Bid Items - Pages 140-141 of 141

Proposal revisions are available at <http://transportation.ky.gov/Construction-Procurement/>.

Plan revisions are available at <http://www.lynnimaging.com/kytransportation/>.

If you have any questions, please contact us at 502-564-3500.

Sincerely,

A handwritten signature in blue ink that reads "Diana Castle Radcliffe".

Diana Castle Radcliffe
Director
Division of Construction Procurement

DR:ks
Enclosures



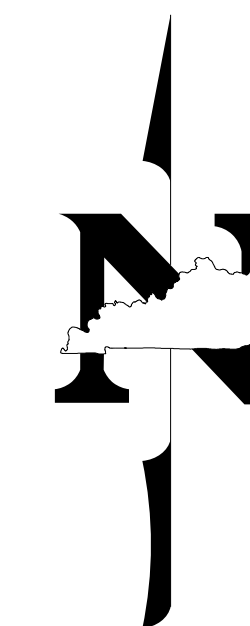
An Equal Opportunity Employer M/F/D

COUNTY OF	ITEM NO.	SHEET NO.
MERCER	07-1117.00	RI

Commonwealth of Kentucky DEPARTMENT OF HIGHWAYS

PLANS OF PROPOSED PROJECT

MERCER COUNTY DEEP CREEK ROAD (CR 1225) BRIDGE REPLACEMENT STP BRZ 0703 (325)



INDEX OF SHEETS

SHEET NO.	DESCRIPTION
R1	LAYOUT SHEET
R2-R2B	TYPICAL SECTIONS-SUMMARY OF QUANTITIES
R3-R5	PLAN AND PROFILE SHEETS
R6	RIGHT OF WAY SUMMARY SHEETS
R7-R7F	DETAIL SHEETS
R8-R9	TRAFFIC CONTROL SHEETS
R10	EROSION CONTROL SHEETS
R11	COORDINATE CONTROL SHEETS
S1-S22	STRUCTURE PLANS
X1-X11	CROSS SECTION SHEETS

SHEETS NOT INCLUDED IN TOTAL SHEETS

2A, 2B, 7A, 7B, 7C, 7D, 7E, 7F, 7G, 7H

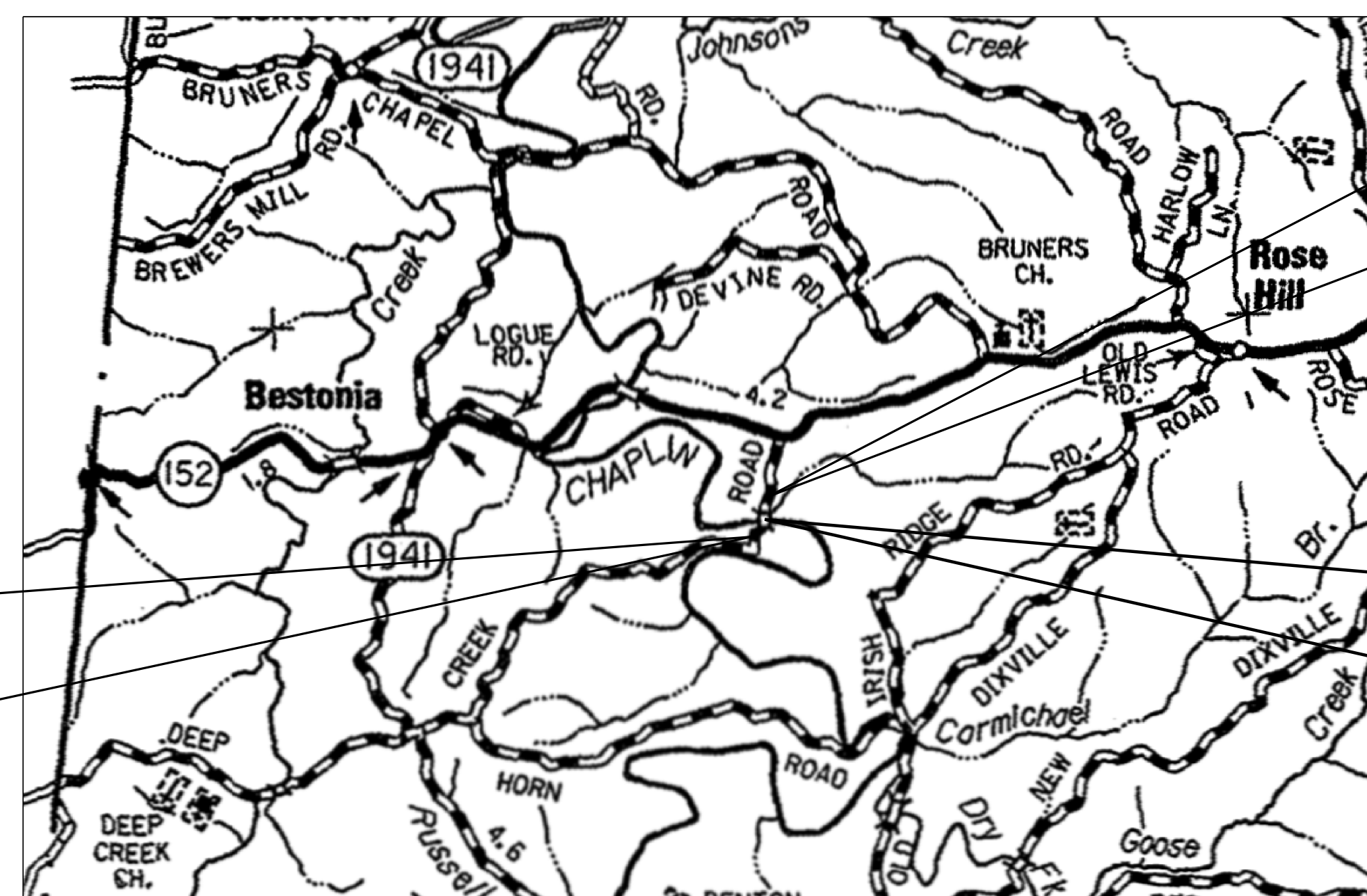
STANDARD DRAWINGS

NUMBER

BHS-007-06	RDX-210-02
RBI-001-10	RDX-220-04
RBI-002-06	RDX-230
RBR-016-04	RGX-001-05
RDP-001-05	RGX-010-03
RDP-005-04	RGX-200
RDP-006-03	TTD-110-01
RDP-010-08	RBC-001-10
	RPM-100-09

TOTAL STD. DRAWINGS = 17

STA. 12+00.00
BEGIN CONSTRUCTION



STA. 22+00.00
END CONSTRUCTION

STA. 16+60.00
CONSTRUCT 60'-120'-70' BRIDGE

THE CONTROL OF ACCESS ON THIS
PROJECT SHALL BE BY PERMIT

THESE ARE GRADE, DRAIN, AND
SURFACING PLANS



LAYOUT MAP

DESIGN CRITERIA

CLASS OF HIGHWAY	RURAL LOCAL
TYPE OF TERRAIN	ROLLING
DESIGN SPEED	15 MPH
REQUIRED NPSD	
REQUIRED PSD	
LEVEL OF SERVICE	
ADT PRESENT (2011)	200
ADT FUTURE (2034)	300
DHV (2011) 30 (2034) 40	
D %	
T % (2011) 10.4% (2034) 13%	

GEOGRAPHIC COORDINATES

LATITUDE 37 DEGREES 44 MINUTES 11 SECONDS NORTH
LONGITUDE 84 DEGREES 57 MINUTES 31 SECONDS WEST

DESIGNED

% RESTRICTED SD	
LEVEL OF SERVICE	
MAX. DISTANCE W/O PASSING	

LENGTH	LIN. FT.	MILES	LENGTH	LIN. FT.	MILES	LENGTH	LIN. FT.	MILES	LENGTH	LIN. FT.	MILES
1,000	0.19										
ADDED	FOR EQUALITIES	LIN. FT.	ADDED	FOR EQUALITIES	LIN. FT.	ADDED	FOR EQUALITIES	LIN. FT.	ADDED	FOR EQUALITIES	LIN. FT.
DEDUCTED	NOT INCLUDED		DEDUCTED	NOT INCLUDED		DEDUCTED	NOT INCLUDED		DEDUCTED	NOT INCLUDED	
RAILROAD CROSSINGS NO. <u>0</u>	LIN. FT.		RAILROAD CROSSINGS NO. <u>0</u>	LIN. FT.		RAILROAD CROSSINGS NO. <u>0</u>	LIN. FT.		RAILROAD CROSSINGS NO. <u>0</u>	LIN. FT.	
BRIDGES <u>250</u>	LIN. FT.		BRIDGES <u>250</u>	LIN. FT.		BRIDGES <u>250</u>	LIN. FT.		BRIDGES <u>250</u>	LIN. FT.	

Commonwealth of Kentucky DEPARTMENT OF HIGHWAYS COUNTY OF MERCER

DEEP CREEK ROAD (CR 1225)

ITEM NO.	07-1117.00
PROJECT NUMBER:	STP BRZ 0703 (325) FD52 084 1225 002-003
LETTING DATE:	NOVEMBER 21, 2014
RECOMMENDED BY:	ANANIAS CALVIN III 10-3-2014 PROJECT MANAGER DATE:
PLAN APPROVED BY:	<i>[Signature]</i> 02/25/2015 STATE HIGHWAY ENGINEER DATE:

FILE NAME: C:\PWORK\TYLER\MILLS\00992786\001000LS.DGN

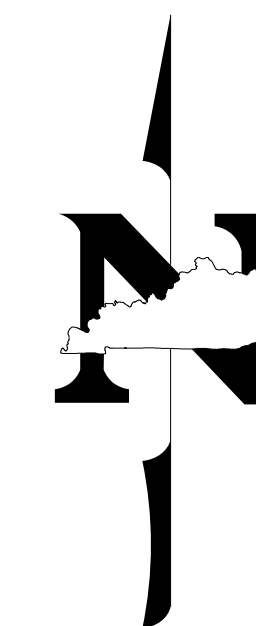
USER: tyler, mills
DATE PLOTTED: January 1, 2001

E-SHEET NAME: 001000LS

MicroStation v8.11.7.180

COUNTY OF	ITEM NO.	SHEET NO.
MERCER	07-1117.00	RI

Commonwealth of Kentucky DEPARTMENT OF HIGHWAYS

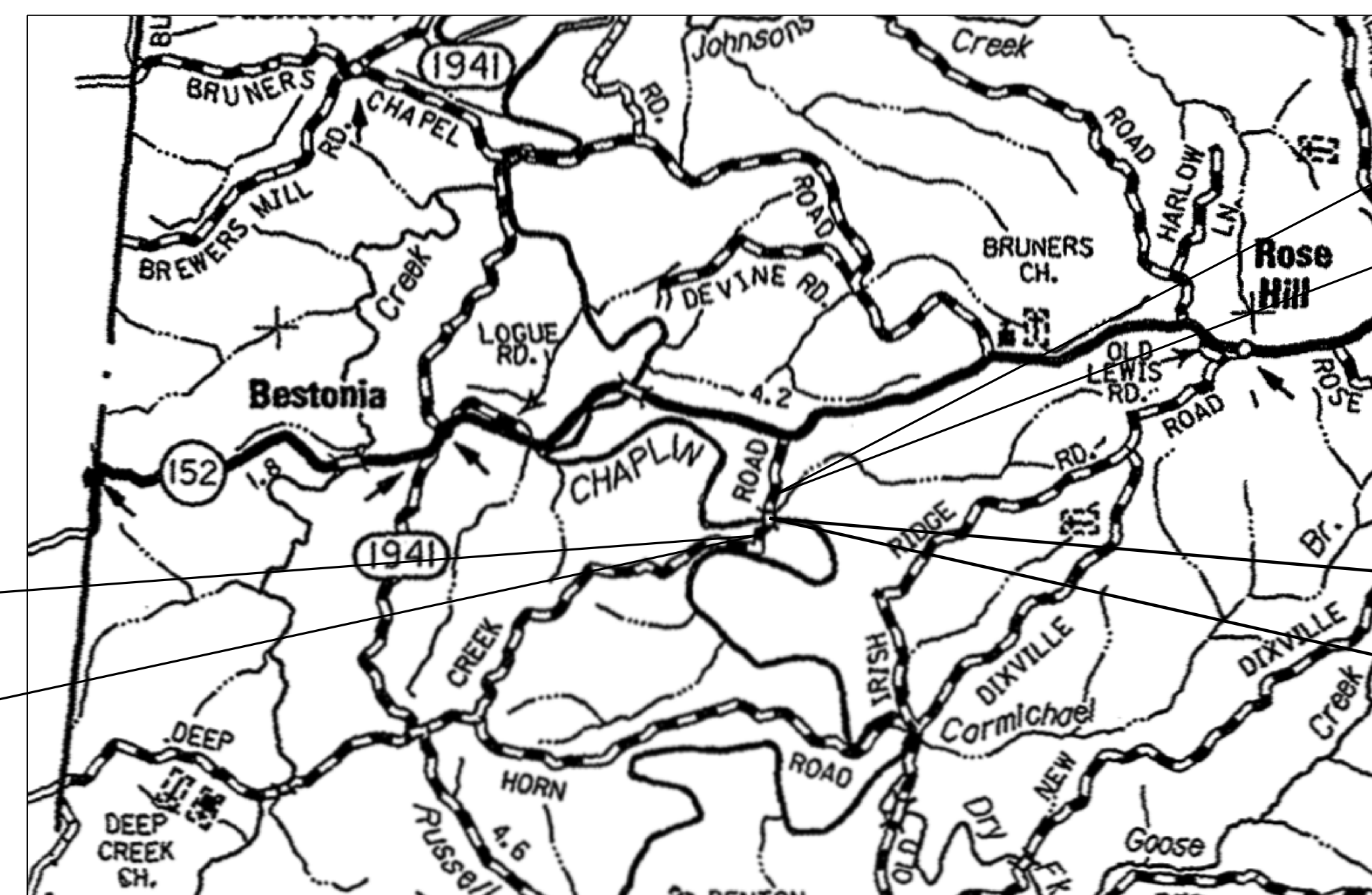


PLANS OF PROPOSED PROJECT MERCER COUNTY DEEP CREEK ROAD (CR 1225) BRIDGE REPLACEMENT STP BRZ 0703 (325)

SHEET NO.	DESCRIPTION
R1	LAYOUT SHEET
R2-R2B	TYPICAL SECTIONS-SUMMARY OF QUANTITIES
R3-R5	PLAN AND PROFILE SHEETS
R6	RIGHT OF WAY SUMMARY SHEETS
R7-R7F	DETAIL SHEETS
R8-R9	TRAFFIC CONTROL SHEETS
R10	EROSION CONTROL SHEETS
R11	COORDINATE CONTROL SHEETS
S1-S22	STRUCTURE PLANS
X1-X11	CROSS SECTION SHEETS

SHEETS NOT INCLUDED IN TOTAL SHEETS
2A, 2B, 7A, 7B, 7C, 7D, 7E, 7F, 7G, 7H

STANDARD DRAWINGS	
NUMBER	
BHS-007-06	RDX-210-02
RBI-001-10	RDX-220-04
RBI-002-06	RDX-230
RBR-016-04	RGX-001-05
RDP-001-05	RGX-010-03
RDP-005-04	RGX-200
RDP-006-03	RBC-001-10
RDP-010-08	RPM-100-09
TOTAL STD. DRAWINGS = 17	



STA. 12+00.00
BEGIN CONSTRUCTION

STA. 22+00.00
END CONSTRUCTION

STA. 16+60.00
CONSTRUCT 60'-120'-70' BRIDGE

THE CONTROL OF ACCESS ON THIS
PROJECT SHALL BE BY PERMIT

THESE ARE GRADE, DRAIN, AND
SURFACING PLANS



LAYOUT MAP

DESIGN CRITERIA

CLASS OF HIGHWAY	RURAL LOCAL
TYPE OF TERRAIN	ROLLING
DESIGN SPEED	15 MPH
REQUIRED NPSD	
REQUIRED PSD	
LEVEL OF SERVICE	
ADT PRESENT (2011)	200
ADT FUTURE (2034)	300
DHV (2011) 30	(2034) 40
D %	
T % (2011) 10.4%	(2034) 13%

GEOGRAPHIC COORDINATES

LATITUDE 37 DEGREES 44 MINUTES 11 SECONDS NORTH
LONGITUDE 84 DEGREES 57 MINUTES 31 SECONDS WEST

DESIGNED

% RESTRICTED SD	
LEVEL OF SERVICE	
MAX. DISTANCE W/O PASSING	

LENGTH	LIN. FT.	MILES	LENGTH	LIN. FT.	MILES	LENGTH	LIN. FT.	MILES	LENGTH	LIN. FT.	MILES
1,000	0.19										
ADDED	FOR EQUALITIES		ADDED	FOR EQUALITIES		ADDED	FOR EQUALITIES		ADDED	FOR EQUALITIES	
DEDUCTED	NOT INCLUDED		DEDUCTED	NOT INCLUDED		DEDUCTED	NOT INCLUDED		DEDUCTED	NOT INCLUDED	
RAILROAD CROSSINGS NO.			RAILROAD CROSSINGS NO.			RAILROAD CROSSINGS NO.			RAILROAD CROSSINGS NO.		
BRIDGES	250		BRIDGES			BRIDGES			BRIDGES		

Commonwealth of Kentucky DEPARTMENT OF HIGHWAYS COUNTY OF MERCER

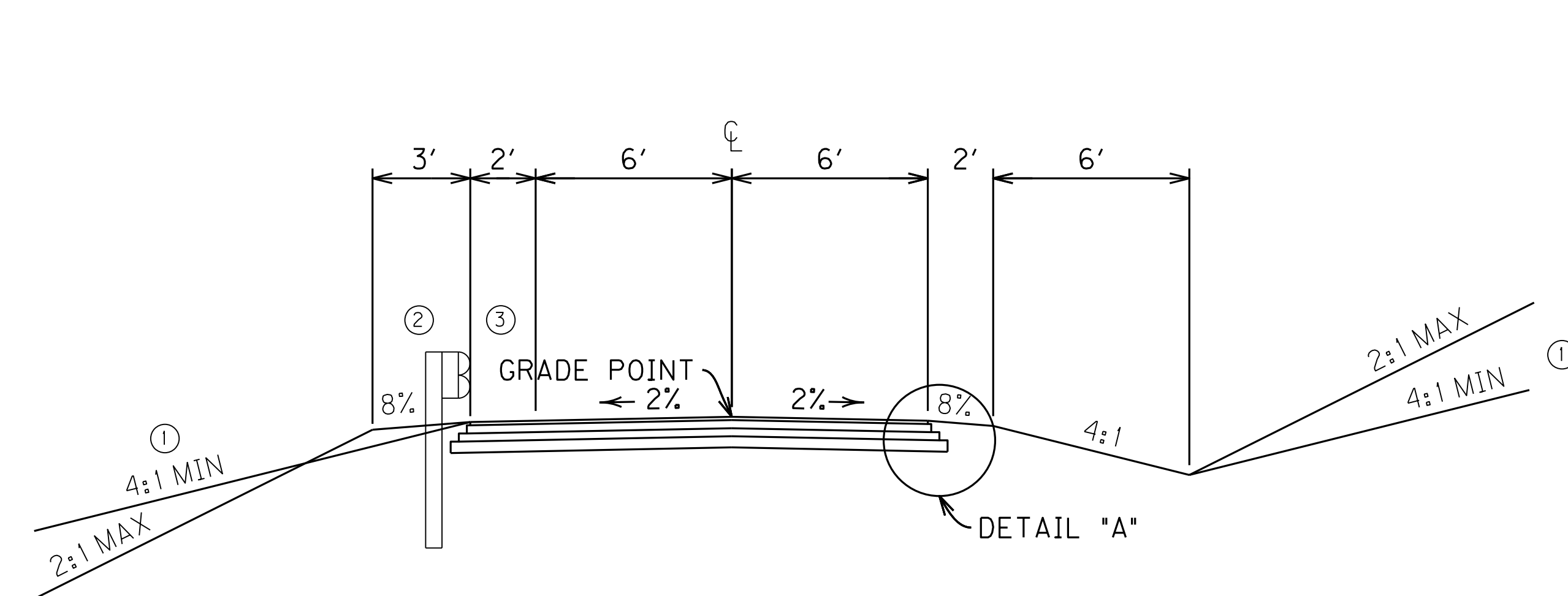
DEEP CREEK ROAD (CR 1225)

ITEM NO. 07-1117.00
PROJECT NUMBER: STP BRZ 0703 (325)
FD52 084 1225 002-003
LETTING DATE: NOVEMBER 21, 2014

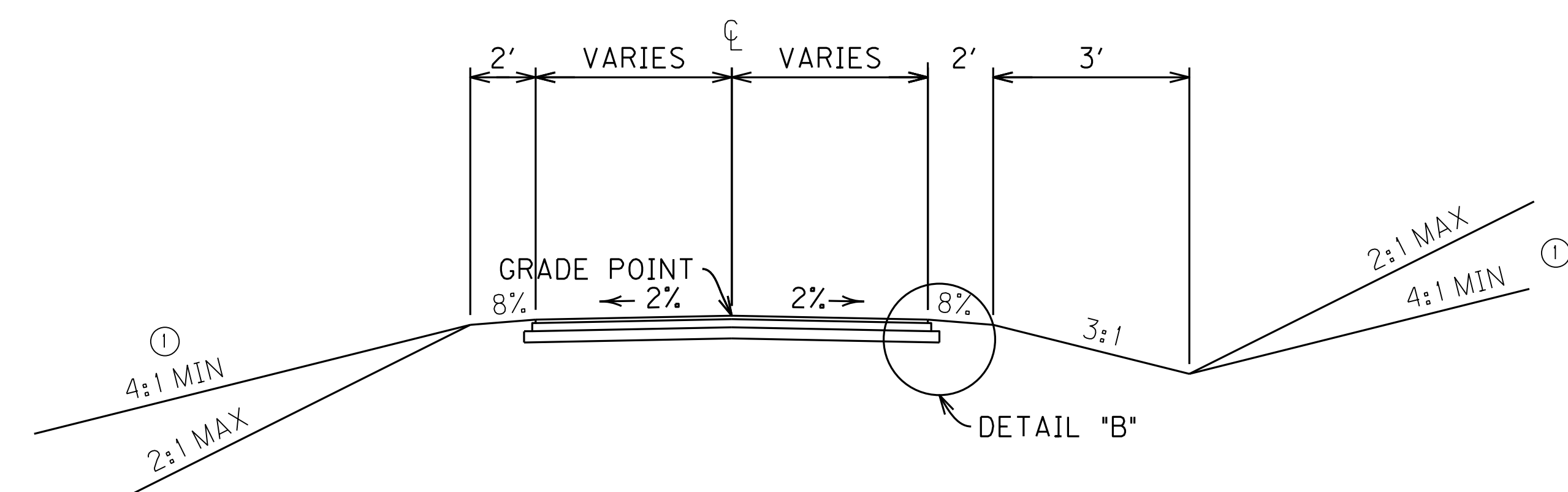
RECOMMENDED BY: ANANIAS CALVIN III 10-3-2014
PROJECT MANAGER
DATE:
PLAN APPROVED BY: *[Signature]* 02/25/2015
STATE HIGHWAY ENGINEER
DATE:

FILE NAME: G:\PWORK\TYLER\MILLS\00992786\001000LS.DGN
USER: tyler, mills
DATE PLOTTED: January 1, 2001
E-SHEET NAME: 001000LS
MicroStation v8.11.7.180

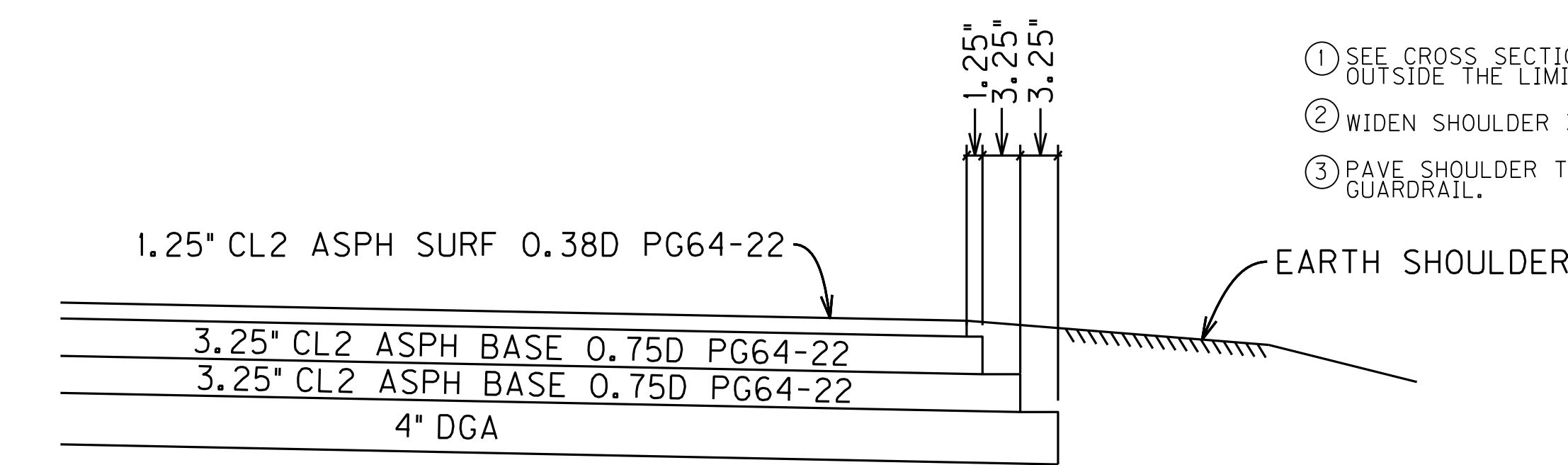
TYPICAL SECTIONS



**NORMAL SECTION
MAINLINE**

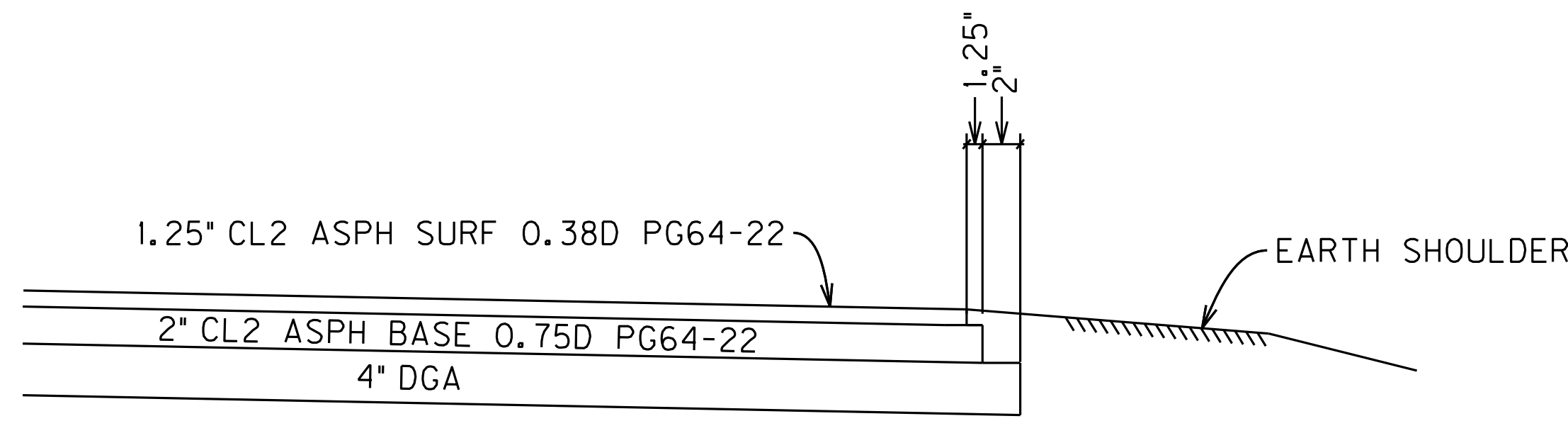


**NORMAL SECTION
ENTRANCES**



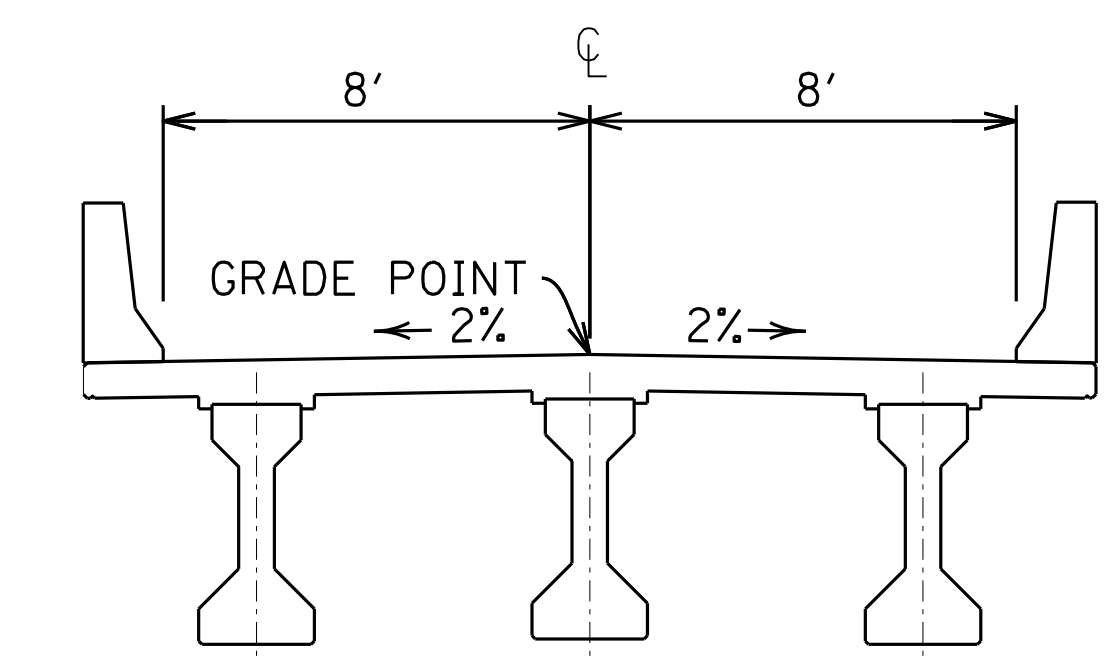
DETAIL "A"

~ ~ MAINLINE PAVEMENT ~ ~
 APPROXIMATELY 10" BASE ——— [4" DGA BASE
 6.5" CL2 ASPH BASE 0.75D PG 64-22 (3.25"+3.25")
 APPROXIMATELY 1.25" SURFACE ——— [1.25" CL2 ASPH SURFACE 0.38D PG 64-22



DETAIL "B"

~ ~ ENTRANCE PAVEMENT ~ ~
 APPROXIMATELY 6" BASE ——— [4" DGA BASE
 2" CL2 ASPH BASE 0.75D PG 64-22
 APPROXIMATELY 1.25" SURFACE ——— [1.25" CL2 ASPH SURFACE 0.38D PG 64-22



**TYPICAL PCC I-BEAM
BRIDGE SECTION**

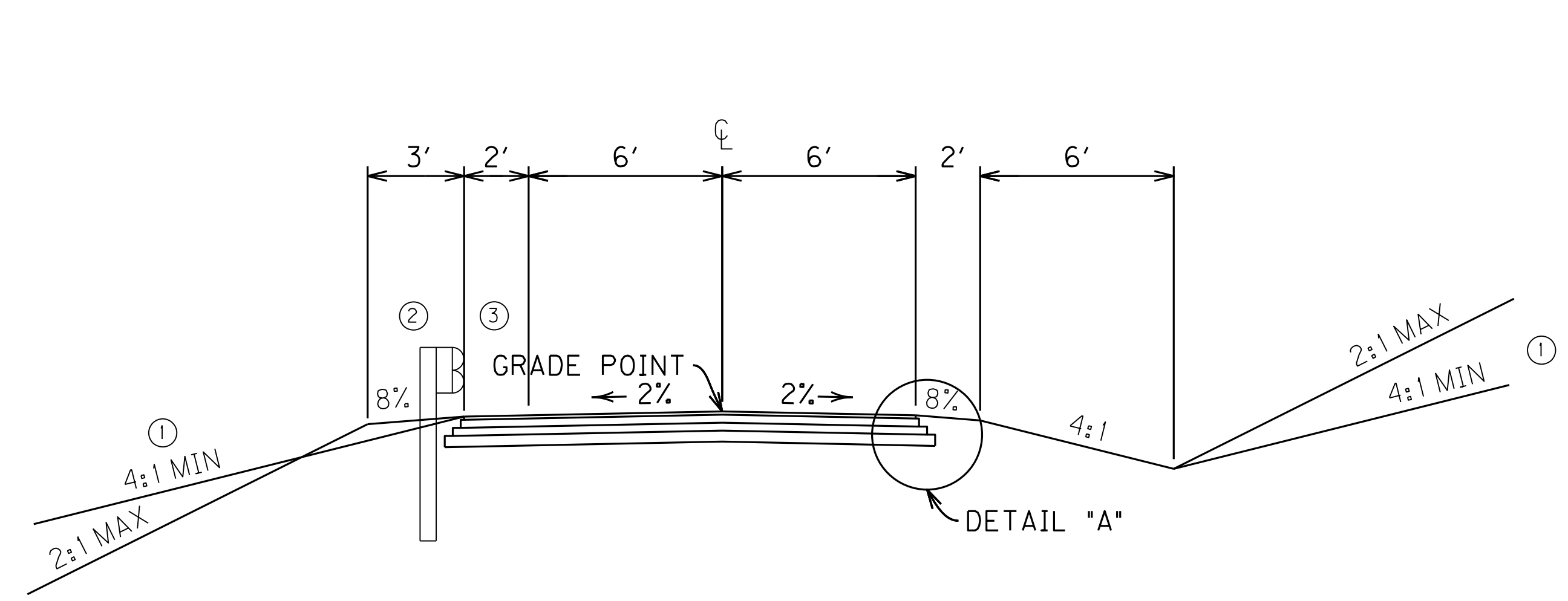
- ① SEE CROSS SECTIONS FOR SLOPES OUTSIDE THE LIMITS OF THE SHOULDER.
- ② WIDEN SHOULDER 3' FOR GUARDRAIL.
- ③ PAVE SHOULDER TO THE FACE OF GUARDRAIL.

SCALE: 1"=NTS

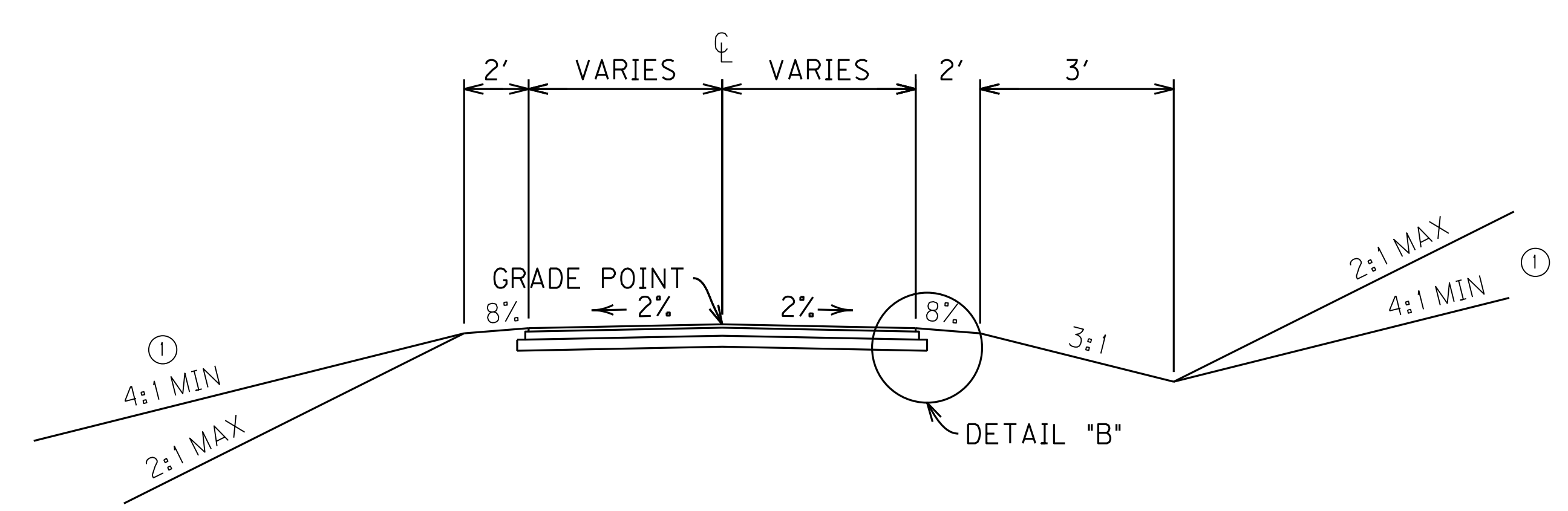
DEEP CREEK ROAD (CR 1225) OVER
CHAPLIN RIVER
TYPICAL SECTIONS

FILE NAME: G:\PWORK\CASEY.SMITH\033625\ROO200TS.DGN
 USER: casey.smith
 DATE PLOTTED: March 13, 2015
 E-SHEET NAME: ROO200TS
 MicroStation v8.11.7.443

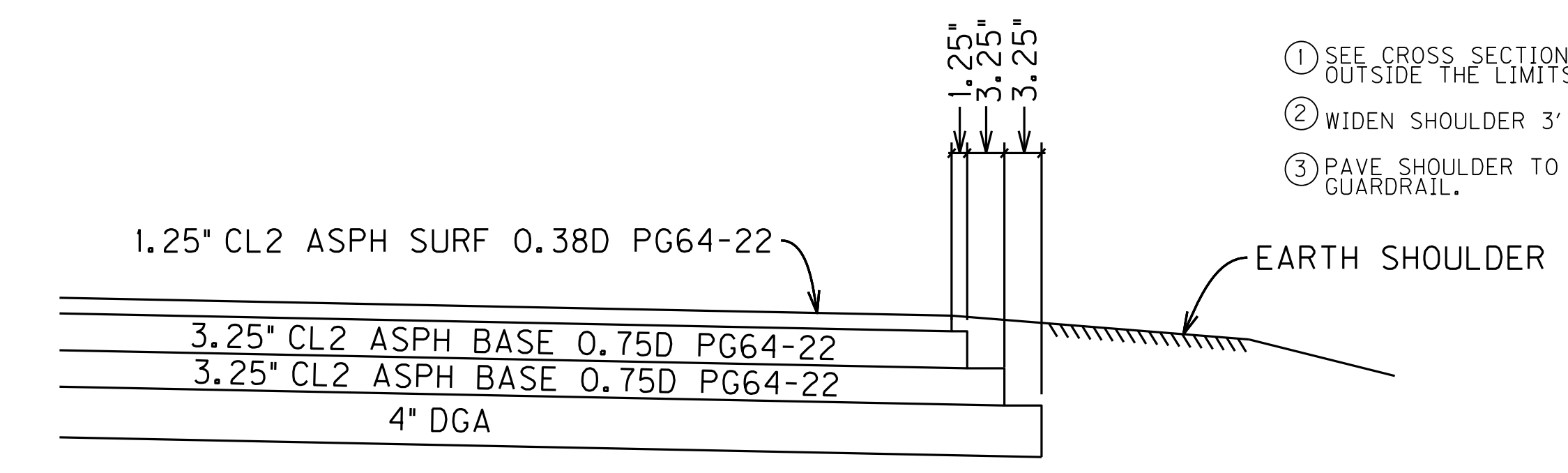
TYPICAL SECTIONS



**NORMAL SECTION
MAINLINE**



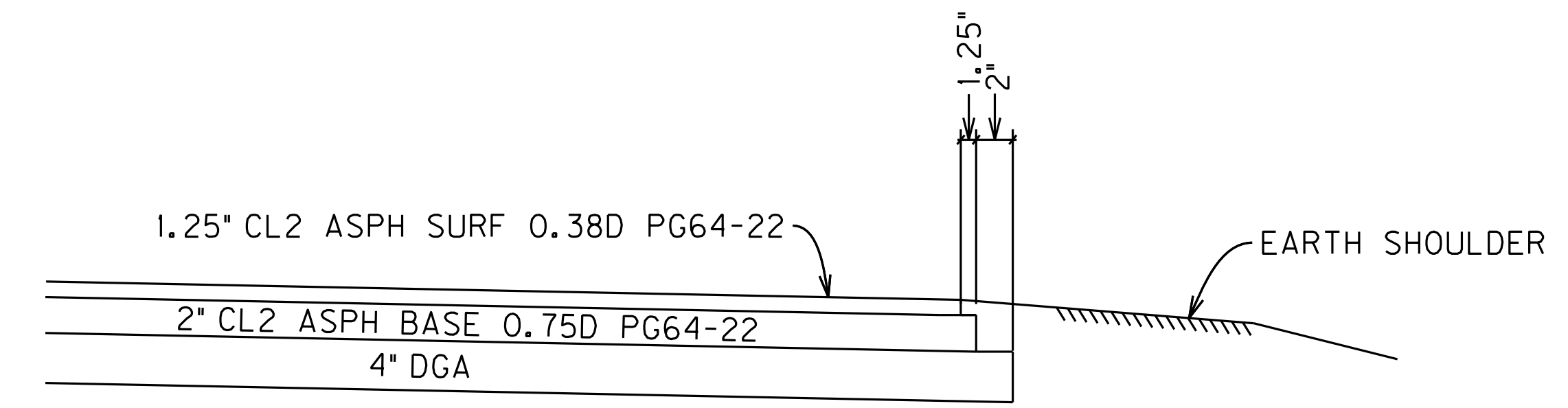
**NORMAL SECTION
ENTRANCES**



DETAIL "A"

~~ MAINLINE PAVEMENT ~~

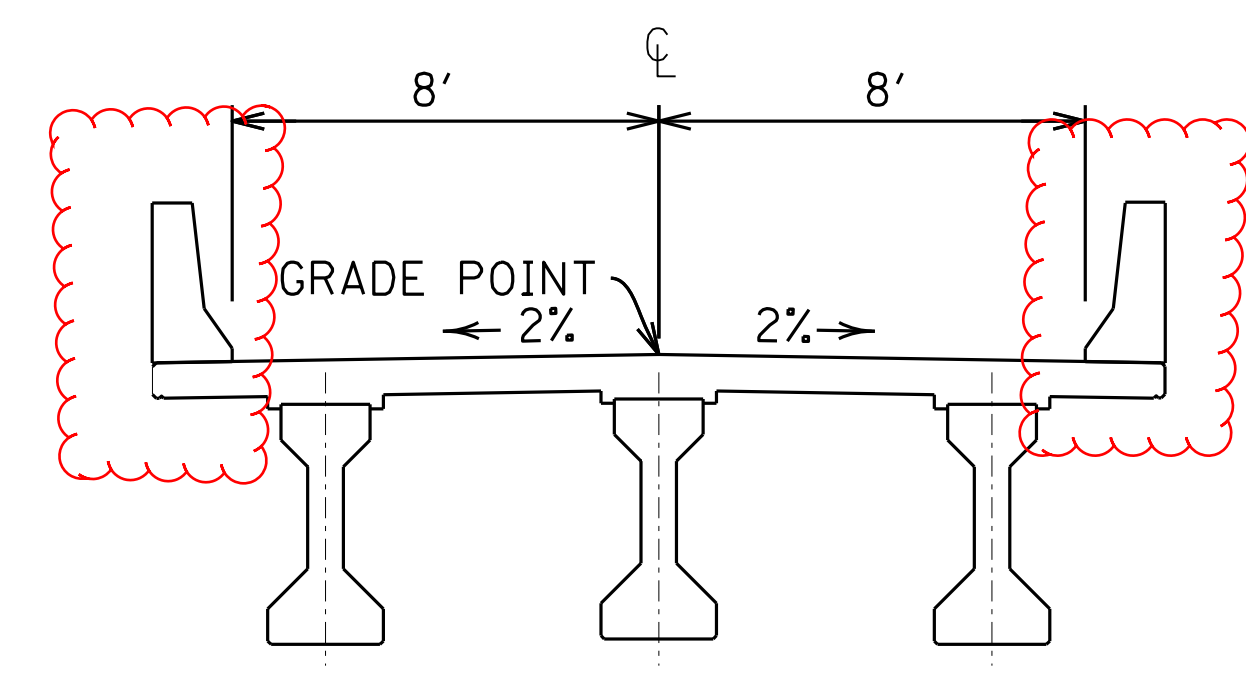
APPROXIMATELY 10' BASE ——— [4" DGA BASE
6.5" CL2 ASPH BASE 0.75D PG 64-22 (3.25"+3.25")
APPROXIMATELY 1.25' SURFACE ——— [1.25" CL2 ASPH SURFACE 0.38D PG 64-22



DETAIL "B"

~~ ENTRANCE PAVEMENT ~~

APPROXIMATELY 6' BASE ——— [4" DGA BASE
2" CL2 ASPH BASE 0.75D PG 64-22
APPROXIMATELY 1.25' SURFACE ——— [1.25" CL2 ASPH SURFACE 0.38D PG 64-22



**TYPICAL PCC I-BEAM
BRIDGE SECTION**

- ① SEE CROSS SECTIONS FOR SLOPES OUTSIDE THE LIMITS OF THE SHOULDER.
- ② WIDEN SHOULDER 3' FOR GUARDRAIL.
- ③ PAVE SHOULDER TO THE FACE OF GUARDRAIL.

SCALE: 1"=NTS

DEEP CREEK ROAD (CR 1225) OVER
CHAPLIN RIVER
TYPICAL SECTIONS

FILE NAME: G:\PWORK\CASEY.SMITH\033625\ROO200TS.DGN
 USER: casey.smith
 DATE PLOTTED: March 13, 2015
 E-SHEET NAME: ROO200TS
 MicroStation v8.11.7.443

GENERAL SUMMARY

ITEM CODE	ITEM	UNIT				TOTAL PROJECT
2200	ROADWAY EXCAVATION	CU YD				2607
2545	CLEARING AND GRUBBING ③	LUMP SUM				1
5985	SEEDING AND PROTECTION ②	SQ YD				7794
5989	SPECIAL SEEDING CROWN VETCH (USE ON 2:1 SLOPES)	SQ YD				443
5953	TEMP SEEDING AND PROTECTION	SQ YD				824
5952	TEMP MULCH	SQ YD				10,681
2701	TEMP SILT FENCE	LF				2544
2709	CLEAN TEMP SILT FENCE	LF				5088
2703	SILT TRAP TYPE A	EACH				2
2706	CLEAN SILT TRAP TYPE A	EACH				4
2704	SILT TRAP TYPE B	EACH				2
2707	CLEAN SILT TRAP TYPE B	EACH				4
2731	REMOVE STRUCTURE ④	LUMP SUM				1
2360	GUARDRAIL TERMINAL SECTION NO. 1	EACH				1
2371	GUARDRAIL END TREATMENT TYPE 7	EACH				3
2351	GUARDRAIL-STEEL W BEAM-S FACE	LF				50
2363	GUARDRAIL CONNECTOR TO BRIDGE END TYPE A	EACH				4
5950	EROSION CONTROL BLANKET	SQ YD				358
2569	DEMobilIZATION	LUMP SUM				1
2726	STAKING	LUMP SUM				1
2242	WATER ⑤	M GAL				9.5
2432	WITNESS POST	EACH				9
2483	CHANNEL LINING CLASS II	TONS				467
2091	REMOVE PAVEMENT	SQ YD				196
5963	INITIAL FERTILIZER	TON				0.24
5964	20-10-10 FERTILIZER	TON				0.40
5992	AGRICULTURAL LIMESTONE	TON				5
2014	BARRICADE - TYPE III	EACH				2
2429	RIGHT-OF-WAY MONUMENT TYPE I	EACH				9
2650	MAINTAIN & CONTROL TRAFFIC	LUMP SUM				1
2562	TEMPORARY SIGNS	SQ FT				153
1891	ISLAND HEADER CURB TYPE 2	LF				100

NOTES

ALL ASPHALT MIXTURES SHALL BE ESTIMATED AT 110 LBS. PER SQ. YD. PER INCH OF DEPTH, UNLESS NOTED OTHERWISE.

- ① ESTIMATED AT 115 LBS. PER SQ. YD. PER INCH OF DEPTH.
- ② SEED MIX TYPE I (USE ON 3:1 SLOPES OR FLATTER) = 7,605 SQ YDS
SEED MIX TYPE II (USE ON SLOPES BETWEEN 2:1 AND 3:1) = 189 SQ YDS
- ③ CLEARING AND GRUBBING FOR 2.21 ACRES
- ④ 64' - 120' - 60' STEEL TRUSS BRIDGE
- ⑤ FOR CONTROLLING DUST CAUSED BY MAINTAINING TRAFFIC ONLY

*Earthwork Quantities
Sta. 12+00 to 22+00*

Com = 2,607
Emb = 1,507

PAVING AREAS

COUNTY OF	ITEM NO.	SHEET NO.
MERCER	07-1117.00	R2A

ITEM	MAINLINE	ENTRANCES	MAINLINE SHOULDERS	TOTAL PROJECT
	S Q U A R E Y A R D S			
1.25" CL2 ASPH SURF 0.38D PG64-22	1000	381	67	1448
2" CL2 ASPH BASE 0.75D PG64-22		381		381
3.25" CL2 ASPH BASE 0.75D PG64-22	1017		67	1084
3.25" CL2 ASPH BASE 0.75D PG64-22	1063		67	1130
4" DGA BASE	1108	381	67	1556

PAVING SUMMARY

ITEM CODE	ITEM	UNIT	MAINLINE	ENTRANCES	MAINLINE SHOULDERS	TOTAL PROJECT
301	CL2 ASPH SURF 0.38D PG64-22	TONS	69	26	5	100
221	CL2 ASPH BASE 0.75D PG64-22	TONS	372	42	24	438
1	DGA BASE ①	TONS	255	88	15	358

PIPE SUMMARY

SHEET NO.		SKEW	DESIGN pH LEVEL	MAX. COVER HEIGHT	ENTRANCE PIPE - 15"	ENTRANCE PIPE 15" EQUIV.	ENTRANCE PIPE - 24"	REMARKS
	ITEM CODE				440	450	443	
	UNIT TO BID			LF	LF	LF		
R4	ENT. LT. STA. 13+30	0	M	0.75		36		
R12	ENT. LT. STA. 18+50	0	M	1.25			28	
R4	ENT. RT. STA. 20+50	0	M	0.75	56			
TOTAL PROJECT					56	36	28	

FILE NAME: G:\PWORK\CASEY.SMITH\033530\RO020ASU.DGN

USER: casey.smith
DATE PLOTTED: March 17, 2015

E-SHEET NAME: RO020ASU

MicroStation v8.11.7.443

GENERAL SUMMARY

ITEM CODE	ITEM	UNIT				TOTAL PROJECT
2200	ROADWAY EXCAVATION	CU YD				2607
2545	CLEARING AND GRUBBING ③	LUMP SUM				1
5985	SEEDING AND PROTECTION ②	SQ YD				7794
5989	SPECIAL SEEDING CROWN VETCH (USE ON 2:1 SLOPES)	SQ YD				443
5953	TEMP SEEDING AND PROTECTION	SQ YD				824
5952	TEMP MULCH	SQ YD				10,681
2701	TEMP SILT FENCE	LF				2544
2709	CLEAN TEMP SILT FENCE	LF				5088
2703	SILT TRAP TYPE A	EACH				2
2706	CLEAN SILT TRAP TYPE A	EACH				4
2704	SILT TRAP TYPE B	EACH				2
2707	CLEAN SILT TRAP TYPE B	EACH				4
2731	REMOVE STRUCTURE ④	LUMP SUM				1
2360	GUARDRAIL TERMINAL SECTION NO. 1	EACH				1
2371	GUARDRAIL END TREATMENT TYPE 7	EACH				3
2351	GUARDRAIL-STEEL W-BEAM-S FACE	LF				50
2363	GUARDRAIL CONNECTOR TO BRIDGE END TYPE A	EACH				4
5950	EROSION CONTROL BLANKET	SQ YD				358
2569	DEMobilIZATION	LUMP SUM				1
2726	STAKING	LUMP SUM				1
2242	WATER ⑤	M GAL				9.5
2432	WITNESS POST	EACH				9
2483	CHANNEL LINING CLASS II	TONS				467
2091	REMOVE PAVEMENT	SQ YD				196
5963	INITIAL FERTILIZER	TON				0.24
5964	20-10-10 FERTILIZER	TON				0.40
5992	AGRICULTURAL LIMESTONE	TON				5
2014	BARRICADE - TYPE III	EACH				2
2429	RIGHT-OF-WAY MONUMENT TYPE I	EACH				9
2650	MAINTAIN & CONTROL TRAFFIC	LUMP SUM				1
2562	TEMPORARY SIGNS	SQ FT				153
1891	ISLAND HEADER CURB TYPE 2	LF				100

NOTES

ALL ASPHALT MIXTURES SHALL BE ESTIMATED AT 110 LBS. PER SQ. YD. PER INCH OF DEPTH, UNLESS NOTED OTHERWISE.

- ① ESTIMATED AT 115 LBS. PER SQ. YD. PER INCH OF DEPTH.
- ② SEED MIX TYPE I (USE ON 3:1 SLOPES OR FLATTER) = 7,605 SQ YDS
SEED MIX TYPE II (USE ON SLOPES BETWEEN 2:1 AND 3:1) = 189 SQ YDS
- ③ CLEARING AND GRUBBING FOR 2.21 ACRES
- ④ 64' - 120' - 60' STEEL TRUSS BRIDGE
- ⑤ FOR CONTROLLING DUST CAUSED BY MAINTAINING TRAFFIC ONLY

*Earthwork Quantities
Sta. 12+00 to 22+00*

Com = 2,607
Emb = 1,507

PAVING AREAS

COUNTY OF	ITEM NO.	SHEET NO.
MERCER	07-1117.00	R2A

ITEM	MAINLINE	ENTRANCES	MAINLINE SHOULDERS	REVISED 3/13/2015	
					TOTAL PROJECT
S Q U A R E Y A R D S					
1.25" CL2 ASPH SURF 0.38D PG64-22	1000	381	67		1448
2" CL2 ASPH BASE 0.75D PG64-22		381			381
3.25" CL2 ASPH BASE 0.75D PG64-22	1017		67		1084
3.25" CL2 ASPH BASE 0.75D PG64-22	1063		67		1130
4" DGA BASE	1108	381	67		1556

PAVING SUMMARY

ITEM CODE	ITEM	UNIT	MAINLINE	ENTRANCES	MAINLINE SHOULDERS	TOTAL PROJECT
301	CL2 ASPH SURF 0.38D PG64-22	TONS	69	26	5	100
221	CL2 ASPH BASE 0.75D PG64-22	TONS	372	42	24	438
1	DGA BASE ①	TONS	255	88	15	358

PIPE SUMMARY

SHEET NO.		SKEW	DESIGN pH LEVEL	MAX. COVER HEIGHT	ENTRANCE PIPE - 15"	ENTRANCE PIPE 15" EQUIV.	ENTRANCE PIPE - 24"	REMARKS
	ITEM CODE				440	450	443	
	UNIT TO BID			LF	LF	LF		
R4	ENT. LT. STA. 13+30	0	M	0.75		36		
R12	ENT. LT. STA. 18+50	0	M	1.25			28	
R4	ENT. RT. STA. 20+50	0	M	0.75	56			
TOTAL PROJECT					56	36	28	

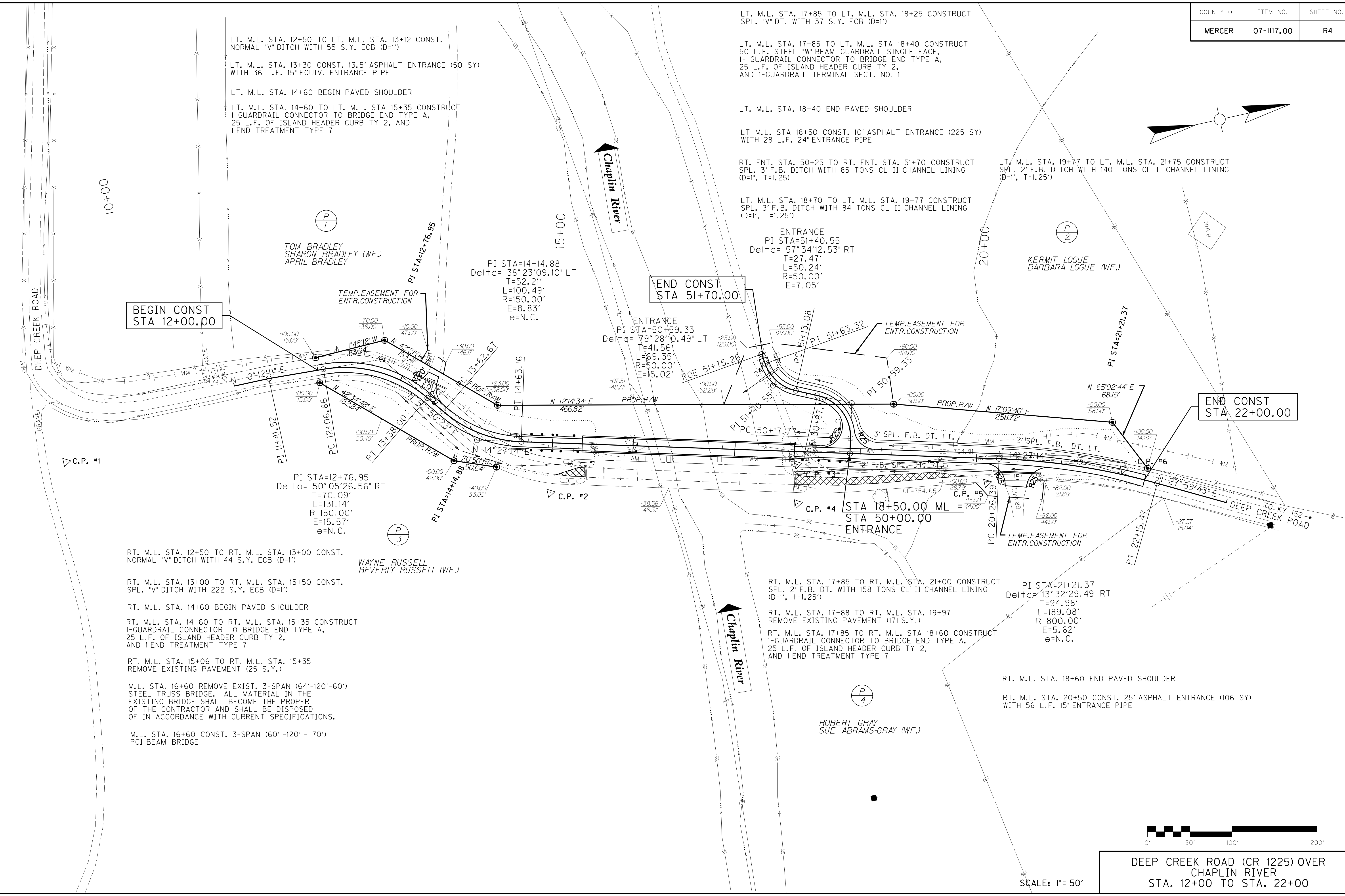
FILE NAME: G:\PWORK\CASEY.SMITH\033530\RO020ASU.DGN

USER: casey.smith
DATE PLOTTED: March 17, 2015

E-SHEET NAME: RO020ASU

MicroStation v8.11.7.443

COUNTY OF	ITEM NO.	SHEET NO.
MERCER	07-III7.00	R4



LT. M.L. STA. 12+50 TO LT. M.L. STA. 13+12 CONST. NORMAL "V" DITCH WITH 55 S.Y. ECB (D=1')

LT. M.L. STA. 13+30 CONST. 13.5' ASPHALT ENTRANCE (50 SY) WITH 36 L.F. 15" EQUIV. ENTRANCE PIPE

LT. M.L. STA. 14+60 BEGIN PAVED SHOULDER

LT. M.L. STA. 14+60 TO LT. M.L. STA 15+35 CONSTRUCT 1-GUARDRAIL CONNECTOR TO BRIDGE END TYPE A, 25 L.F. OF ISLAND HEADER CURB TY 2, AND 1 END TREATMENT TYPE 7

LT. M.L. STA. 17+85 TO LT. M.L. STA. 18+25 CONSTRUCT SPL. "V" DT. WITH 37 S.Y. ECB (D=1')

LT. M.L. STA. 17+85 TO LT. M.L. STA 18+40 CONSTRUCT 50 L.F. STEEL "W" BEAM GUARDRAIL SINGLE FACE, 1-GUARDRAIL CONNECTOR TO BRIDGE END TYPE A, 25 L.F. OF ISLAND HEADER CURB TY 2, AND 1-GUARDRAIL TERMINAL SECT. NO. 1

LT. M.L. STA. 18+40 END PAVED SHOULDER

LT. M.L. STA 18+50 CONST. 10' ASPHALT ENTRANCE (225 SY) WITH 28 L.F. 24" ENTRANCE PIPE

RT. ENT. STA. 50+25 TO RT. ENT. STA. 51+70 CONSTRUCT SPL. 3' F.B. DITCH WITH 85 TONS CL II CHANNEL LINING (D=1', T=1.25)

LT. M.L. STA. 18+70 TO LT. M.L. STA. 19+77 CONSTRUCT SPL. 3' F.B. DITCH WITH 84 TONS CL II CHANNEL LINING (D=1', T=1.25')

LT. M.L. STA. 19+77 TO LT. M.L. STA. 21+75 CONSTRUCT SPL. 2' F.B. DITCH WITH 140 TONS CL II CHANNEL LINING (D=1', T=1.25')

ENTRANCE
PI STA=51+40.55
Delta= 57° 34' 12.53" RT
T=27.47'
L=50.24'
R=50.00'
E=7.05'

PI STA=14+14.88
Delta= 38° 23' 09.10" LT
T=52.21'
L=100.49'
R=150.00'
E=8.83'
e=N.C.

ENTRANCE
PI STA=50+59.33
Delta= 79° 28' 10.49" LT
T=41.56'
L=69.35'
R=50.00'
E=15.02'

PI STA=12+76.95
Delta= 50° 05' 26.56" RT
T=70.09'
L=131.14'
R=150.00'
E=15.57'
e=N.C.

RT. M.L. STA. 17+85 TO RT. M.L. STA. 21+00 CONSTRUCT SPL. 2' F.B. DT. WITH 158 TONS CL II CHANNEL LINING (D=1', T=1.25')

RT. M.L. STA. 17+88 TO RT. M.L. STA. 19+97 REMOVE EXISTING PAVEMENT (171 S.Y.)

RT. M.L. STA. 17+85 TO RT. M.L. STA 18+60 CONSTRUCT 1-GUARDRAIL CONNECTOR TO BRIDGE END TYPE A, 25 L.F. OF ISLAND HEADER CURB TY 2, AND 1 END TREATMENT TYPE 7

PI STA=21+21.37
Delta= 13° 32' 29.49" RT
T=94.98'
L=189.08'
R=800.00'
E=5.62'
e=N.C.

RT. M.L. STA. 18+60 END PAVED SHOULDER

RT. M.L. STA. 20+50 CONST. 25' ASPHALT ENTRANCE (106 SY) WITH 56 L.F. 15" ENTRANCE PIPE

RT. M.L. STA. 12+50 TO RT. M.L. STA. 13+00 CONST. NORMAL "V" DITCH WITH 44 S.Y. ECB (D=1')

RT. M.L. STA. 13+00 TO RT. M.L. STA. 15+50 CONST. SPL. "V" DITCH WITH 222 S.Y. ECB (D=1')

RT. M.L. STA. 14+60 BEGIN PAVED SHOULDER

RT. M.L. STA. 14+60 TO RT. M.L. STA. 15+35 CONSTRUCT 1-GUARDRAIL CONNECTOR TO BRIDGE END TYPE A, 25 L.F. OF ISLAND HEADER CURB TY 2, AND 1 END TREATMENT TYPE 7

RT. M.L. STA. 15+06 TO RT. M.L. STA. 15+35 REMOVE EXISTING PAVEMENT (25 S.Y.)

M.L. STA. 16+60 REMOVE EXIST. 3-SPAN (64'-120'-60') STEEL TRUSS BRIDGE. ALL MATERIAL IN THE EXISTING BRIDGE SHALL BECOME THE PROPERTY OF THE CONTRACTOR AND SHALL BE DISPOSED OF IN ACCORDANCE WITH CURRENT SPECIFICATIONS.

M.L. STA. 16+60 CONST. 3-SPAN (60' -120' - 70') PCI BEAM BRIDGE

FILE NAME: G:\PWORK\CASEY.SMITH\033530\RO0400PL.DGN

USER: casey.smith
DATE PLOTTED: March 17, 2015

E-SHEET NAME: RO0400PL

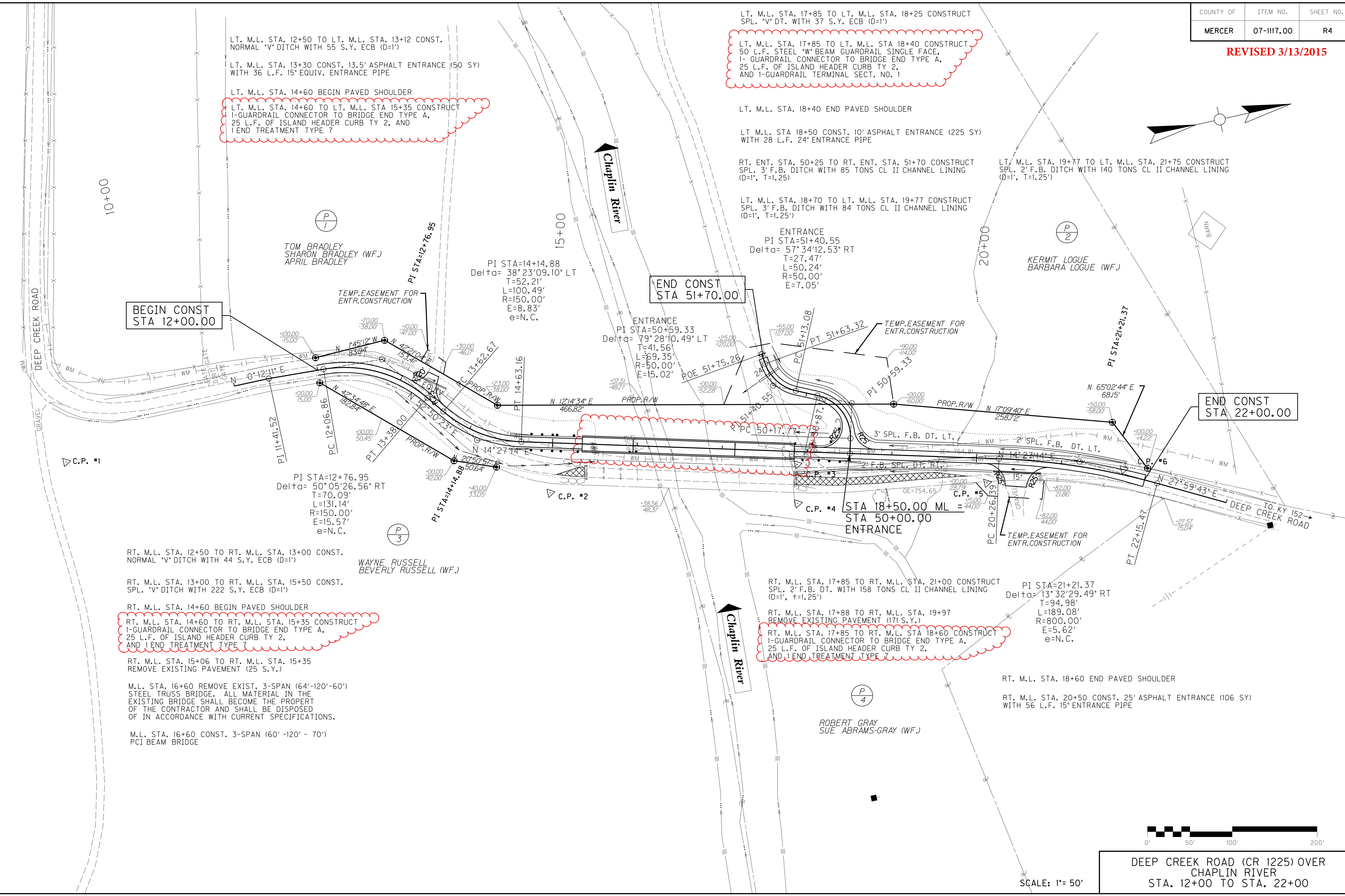
MicroStation v8.11.7.443



DEEP CREEK ROAD (CR 1225) OVER CHAPLIN RIVER
STA. 12+00 TO STA. 22+00

SCALE: 1" = 50'

REVISED 3/13/2015



LT. M.L. STA. 12+50 TO LT. M.L. STA. 13+12 CONST. NORMAL "V" DITCH WITH 55 S.Y. ECB (D=1')

LT. M.L. STA. 13+30 CONST. 13.5' ASPHALT ENTRANCE (50 SY) WITH 36 L.F. 15" EQUIV. ENTRANCE PIPE

LT. M.L. STA. 14+60 BEGIN PAVED SHOULDER

LT. M.L. STA. 14+60 TO LT. M.L. STA 15+35 CONSTRUCT 1-GUARDRAIL CONNECTOR TO BRIDGE END TYPE A, 25 L.F. OF ISLAND HEADER CURB TY 2, AND 1 END TREATMENT TYPE 7

LT. M.L. STA. 17+85 TO LT. M.L. STA. 18+25 CONSTRUCT SPL. "V" DT. WITH 37 S.Y. ECB (D=1')

LT. M.L. STA. 17+85 TO LT. M.L. STA 18+40 CONSTRUCT 50 L.F. STEEL "W" BEAM GUARDRAIL SINGLE FACE, 1- GUARDRAIL CONNECTOR TO BRIDGE END TYPE A, 25 L.F. OF ISLAND HEADER CURB TY 2, AND 1-GUARDRAIL TERMINAL SECT. NO. 1

LT. M.L. STA. 18+40 END PAVED SHOULDER

LT M.L. STA 18+50 CONST. 10' ASPHALT ENTRANCE (225 SY) WITH 28 L.F. 24" ENTRANCE PIPE

RT. ENT. STA. 50+25 TO RT. ENT. STA. 51+70 CONSTRUCT SPL. 3' F.B. DITCH WITH 85 TONS CL II CHANNEL LINING (D=1', T=1.25)

LT. M.L. STA. 18+70 TO LT. M.L. STA. 19+77 CONSTRUCT SPL. 3' F.B. DITCH WITH 84 TONS CL II CHANNEL LINING (D=1', T=1.25')

ENTRANCE
PI STA=51+40.55
Delta= 57° 34' 12.53" RT
T=27.47'
L=50.24'
R=50.00'
E=7.05'

END CONST
STA 51+70.00

ENTRANCE
PI STA=50+59.33
Delta= 79° 28' 10.49" LT
T=41.56'
L=69.35'
R=50.00'
E=15.02'

END CONST
STA 22+00.00

BEGIN CONST
STA 12+00.00

PI STA=12+76.95
Delta= 50° 05' 26.56" RT
T=70.09'
L=131.14'
R=150.00'
E=15.57'
e=N.C.

WAYNE RUSSELL
BEVERLY RUSSELL (WF.)

RT. M.L. STA. 12+50 TO RT. M.L. STA. 13+00 CONST. NORMAL "V" DITCH WITH 44 S.Y. ECB (D=1')

RT. M.L. STA. 13+00 TO RT. M.L. STA. 15+50 CONST. SPL. "V" DITCH WITH 222 S.Y. ECB (D=1')

RT. M.L. STA. 14+60 BEGIN PAVED SHOULDER

RT. M.L. STA. 14+60 TO RT. M.L. STA. 15+35 CONSTRUCT 1-GUARDRAIL CONNECTOR TO BRIDGE END TYPE A, 25 L.F. OF ISLAND HEADER CURB TY 2, AND 1 END TREATMENT TYPE 7

RT. M.L. STA. 15+06 TO RT. M.L. STA. 15+35 REMOVE EXISTING PAVEMENT (25 S.Y.)

M.L. STA. 16+60 REMOVE EXIST. 3-SPAN (64'-120'-60') STEEL TRUSS BRIDGE. ALL MATERIAL IN THE EXISTING BRIDGE SHALL BECOME THE PROPERTY OF THE CONTRACTOR AND SHALL BE DISPOSED OF IN ACCORDANCE WITH CURRENT SPECIFICATIONS.

M.L. STA. 16+60 CONST. 3-SPAN (60' -120' - 70') PCI BEAM BRIDGE

RT. M.L. STA. 17+85 TO RT. M.L. STA. 21+00 CONSTRUCT SPL. 2' F.B. DT. WITH 158 TONS CL II CHANNEL LINING (D=1', T=1.25')

RT. M.L. STA. 17+88 TO RT. M.L. STA. 19+97 REMOVE EXISTING PAVEMENT (171 S.Y.)

RT. M.L. STA. 17+85 TO RT. M.L. STA 18+60 CONSTRUCT 1-GUARDRAIL CONNECTOR TO BRIDGE END TYPE A, 25 L.F. OF ISLAND HEADER CURB TY 2, AND 1 END TREATMENT TYPE 7

PI STA=21+21.37
Delta= 13° 32' 29.49" RT
T=94.98'
L=189.08'
R=800.00'
E=5.62'
e=N.C.

RT. M.L. STA. 18+60 END PAVED SHOULDER

RT. M.L. STA. 20+50 CONST. 25' ASPHALT ENTRANCE (106 SY) WITH 56 L.F. 15" ENTRANCE PIPE

ROBERT GRAY
SUE ABRAMS-GRAY (WF.)

FILE NAME: G:\PWORK\CASEY.SMITH\0335350\RO0400PL.DGN
USER: casey.smith
DATE PLOTTED: March 17, 2015
E-SHEET NAME: RO0400PL
MicroStation v8.11.7.443

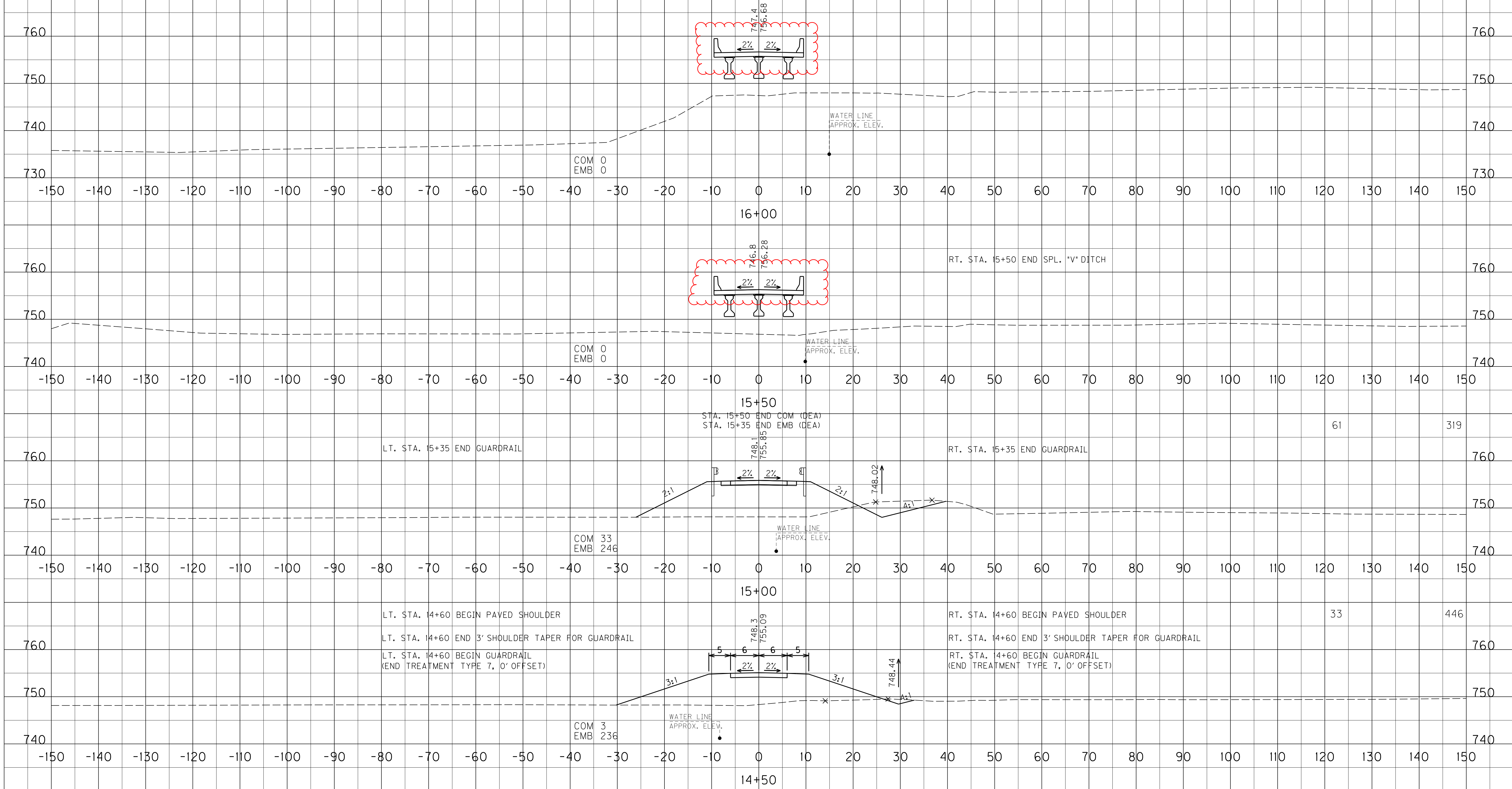


DEEP CREEK ROAD (CR 1225) OVER
CHAPLIN RIVER
STA. 12+00 TO STA. 22+00

SCALE: 1"= 50'

COM EMB
REVISED 3/13/2015

FILE NAME: G:\PWORK\CASEY.SMITH\033625.X00300XS.DGN
 USER: casey.smith
 DATE PLOTTED: March 13, 2015
 E-SHEET NAME: X00300XS
 MicroStation v8.11.7.443



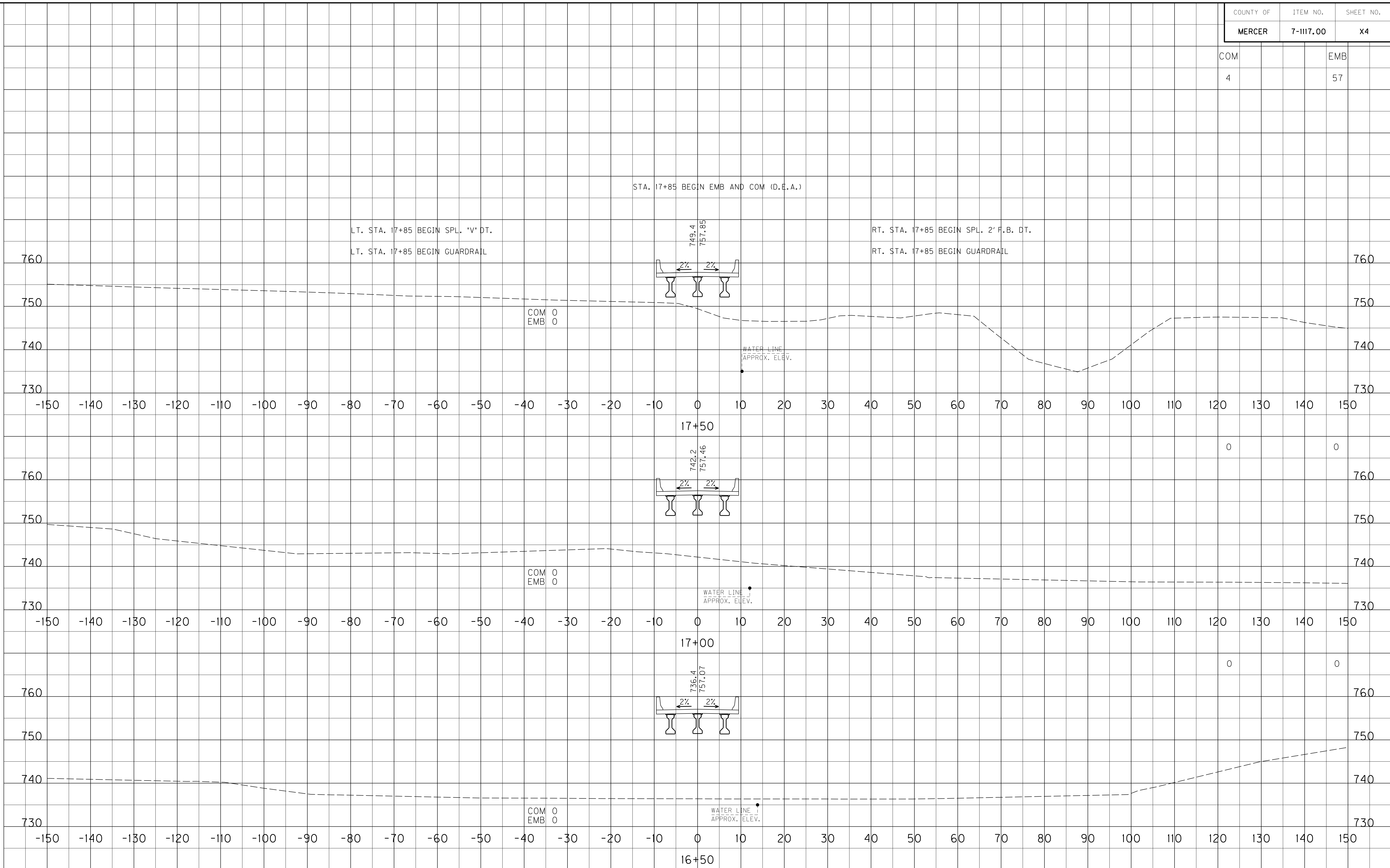
SCALE: 1" = 10' HORIZONTAL
 1" = 10' VERTICAL

MAINLINE
 STA. 14+50 TO STA. 16+00

COUNTY OF	ITEM NO.	SHEET NO.
MERCER	7-1117.00	X4

COM	EMB
4	57

FILE NAME: G:\PWORK\CASEY-SMITH\033625\X00400XS.DGN
 USER: anantios.calvin
 DATE PLOTTED: March 13, 2015
 E-SHEET NAME: X00400XS
 MicroStation v8.11.7.443



SCALE: 1" = 10' HORIZONTAL
1" = 10' VERTICAL

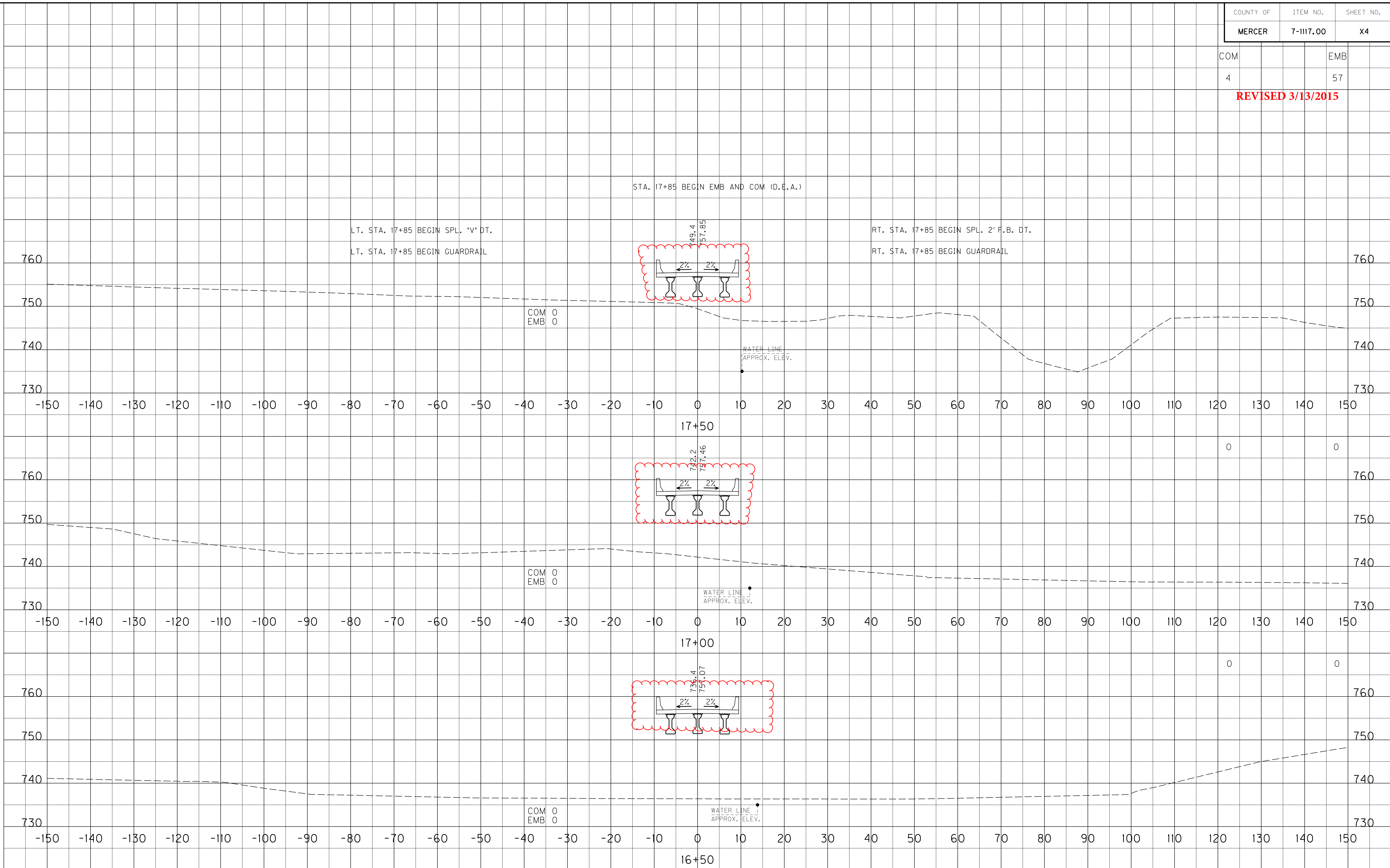
MAINLINE
STA. 16+50 TO STA. 17+50

COUNTY OF	ITEM NO.	SHEET NO.
MERCER	7-1117.00	X4

COM	EMB
4	57

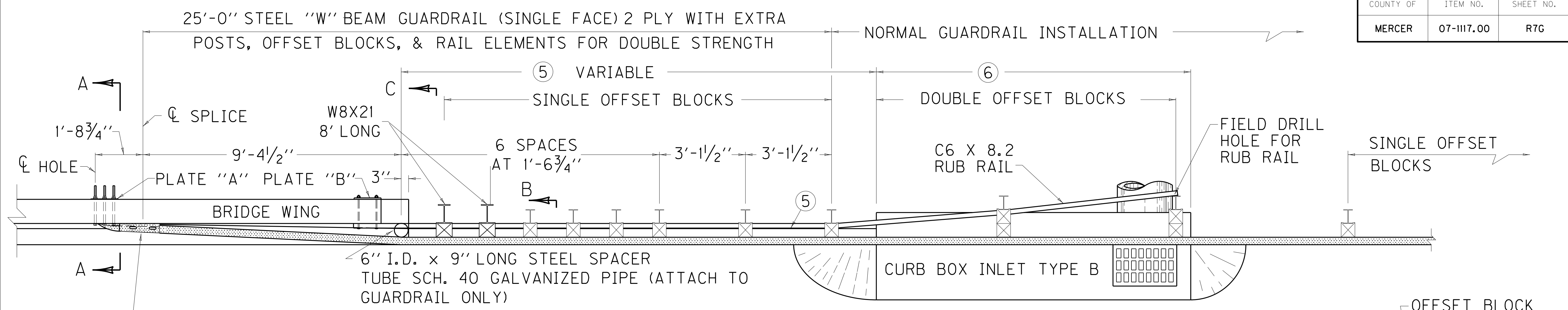
REVISED 3/13/2015

FILE NAME: G:\PWORK\CASEY_SMIT\033625.X00400XS.DGN
 USER: anantios.calvin
 DATE PLOTTED: March 13, 2015
 E-SHEET NAME: X00400XS
 MicroStation v8.11.7.443



SCALE: 1" = 10' HORIZONTAL
 1" = 10' VERTICAL

MAINLINE
 STA. 16+50 TO STA. 17+50



PLAN VIEW TYPE A
 ~ NOTES ~ C ← B ←

1. GENERAL
 - a. SEE CUR. STD. DWGS. IN THE RBB, RBI, RBR, AND RPM-SERIES FOR OTHER RELATED GUARDRAIL DETAILS AND BRIDGE PLANS FOR BRIDGE WING DETAIL.
 - b. SEE CUR. STD. DWG. RDB-SERIES FOR CURB BOX INLET TYPE B.
 - c. GUARDRAIL CONNECTOR TO BRIDGE END TYPE A IS FOR USE ON BOTH BRIDGE ENDS OF AN UNDIVIDED HIGHWAY AND ON THE APPROACH BRIDGE ENDS OF A DIVIDED HIGHWAY.
2. MATERIAL REQUIREMENTS

ALL HARDWARE SHALL BE GALVANIZED. (AASHTO M-232)

5/8" STEEL PLATE "A" (AASHTO M-270)

7/8" HEX HEAD BOLTS OR STEEL THREADED RODS (LENGTH AS SHOWN)

7/8" HEAVY HEX NUTS (7/8" THICK) (AASHTO M-291)

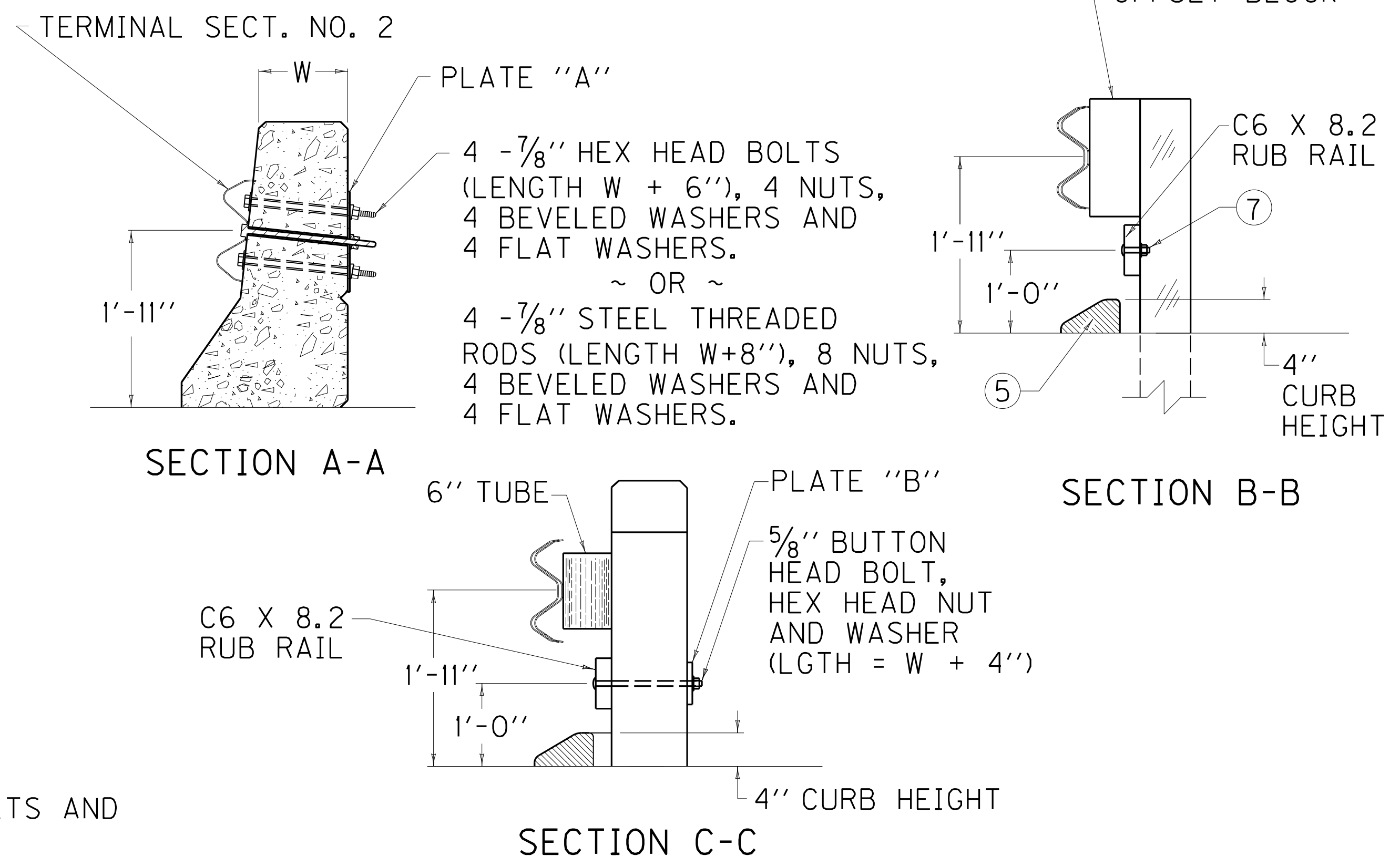
7/8" FLAT WASHERS (3/16" THICK) (AASHTO M-293)

7/8" BEVELED WASHERS (5/16" MEAN THICKNESS) (AASHTO M-293)

BOTH THE BOLT AND THREADED ROD SHALL HAVE A MINIMUM OF 50,000 LBS. TENSILE STRENGTH AT THE NARROWEST POINT.
3. CONSTRUCTION METHODS
 - a. ELIMINATE EXTRA OFFSET BLOCKS WHEN CURB BOX INLET TYPE B IS NOT REQUIRED.
 - b. HOLES TO BE FORMED THROUGH BRIDGE WING WITH 1" I.D. PLASTIC PIPE FOR 7/8" BOLTS AND 3/4" I.D. PLASTIC PIPE FOR 5/8" BOLTS, PIPE SHALL REMAIN IN PLACE.
4. METHOD OF MEASUREMENT AND BASIS OF PAYMENT
 - a. GUARDRAIL CONNECTOR TO BRIDGE END TYPE A SHALL BE PAID FOR AT THE CONTRACT UNIT PRICE EACH, AND INCLUDES: TERMINAL SECTION NO. 2; ALL ITEMS WHICH ARE IN ADDITION TO THE NORMAL INSTALLATION OF STEEL BEAM GUARDRAIL (EXTRA POSTS, OFFSET BLOCKS, RAIL ELEMENTS, SPACER TUBE, HARDWARE, RUB RAIL, ETC.), AND OTHER INCIDENTALS NECESSARY TO COMPLETE THE INSTALLATION AS DETAILED. STEEL "W" BEAM GUARDRAIL (SINGLE FACE) AND ISLAND HEADER CURB ARE SEPARATE BID ITEMS WHICH ARE ALWAYS REQUIRED. CURB BOX INLET TYPE B IS A SEPARATE BID ITEM THAT WILL BE USED WHEN REQUIRED FOR BRIDGE END DRAINAGE.

PAY ITEM	PAY UNIT
GUARDRAIL CONNECTOR TO BRIDGE END TY A	EACH
GUARDRAIL-STEEL "W" BEAM-S FACE	LF
ISLAND HEADER CURB TYPE 1 OR 2	LF
CURB BOX INLET TYPE B (AS REQUIRED)	EACH

b. THE PLASTIC PIPE AND COST OF FORMING SHALL BE INCLUDED IN THE UNIT PRICE BID FOR BRIDGE SUPERSTRUCTURE CONCRETE.



- ⑤ ISLAND HEADER CURB. TRANSITION FROM ISLAND CURB SHAPE TO SHAPE ON BRIDGE WING WITHIN 7'-3". LENGTH OF CURB VARIABLE (22'-3" WHEN L=5'-0") (17'-3" WHEN L=10'-0") (12'-3" WHEN L=15'-0") (7'-3" WHEN L=20'-0"). ON APPROACH END CONSTRUCT 25'-0" OF ISLAND HEADER CURB EVEN WHEN CURB BOX INLET TYPE B IS NOT REQUIRED.
- ⑥ 6'-4" WHEN L=5'-0"
 11'-4" WHEN L=10'-0" ★
 16'-4" WHEN L=15'-0"
 21'-4" WHEN L=20'-0"
- ⑦ 5/8" X 3 1/2" BUTTON HEAD BOLT, HEX HEAD NUT.
8. CURB BOX NOT REQUIRED UNLESS NEEDED FOR DRAINAGE.
- ★ 10'-0" LENGTH IS REQUIRED UNLESS OTHERWISE NOTED.
 L EQUALS THROAT LENGTH OF BOX.

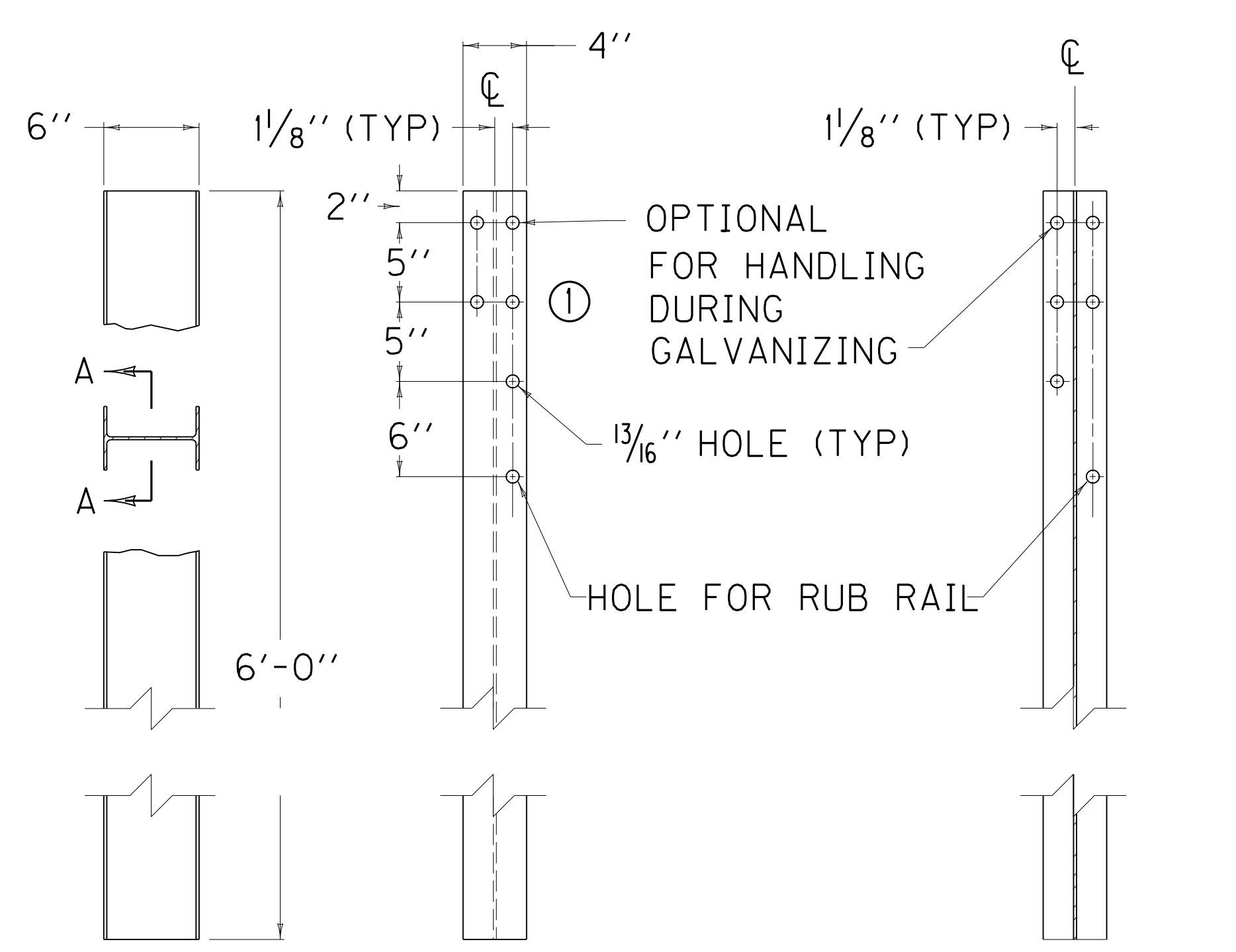
USE WITH CUR. STD. DWGS.
 BHS-008, RBC-002 AND RBC-003

KENTUCKY
 DEPARTMENT OF HIGHWAYS

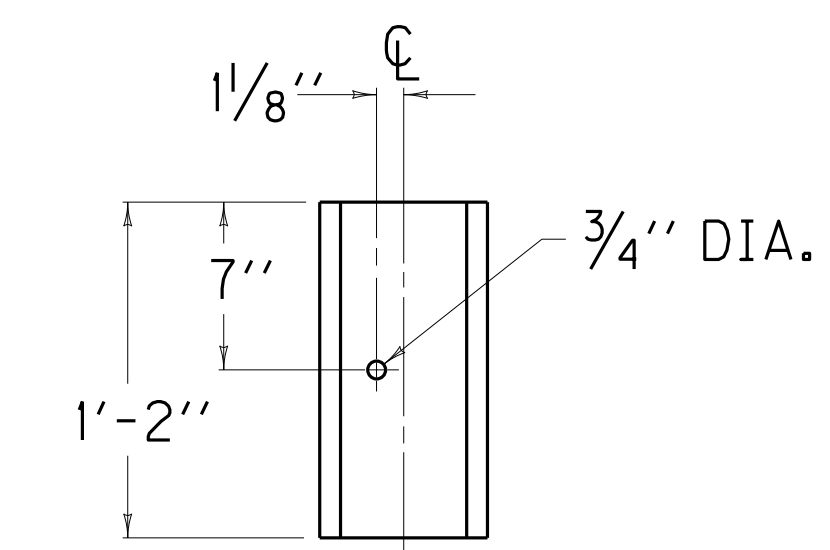
GUARDRAIL CONNECTOR
 TO BRIDGE END
 TYPE A

FILE NAME: U:\PLAN PROCESSING PROJECTS\DISTRICT 07\07-1117.00 - MERCER - CR 1225 OVER CHAPLAIN RIVER\FINAL\ADDENDUM\A070700S.DGN
 USER: chod.greerwell
 DATE PLOTTED: March 17, 2015
 E-SHEET NAME:
 MicroStation v8.11.7.443

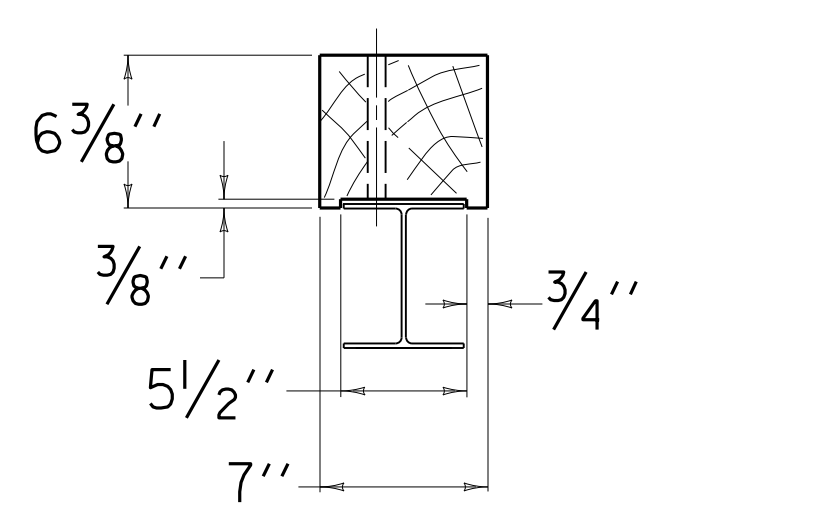
FILE NAME: U:\PLAN PROCESSING PROJECTS\DISTRICT 07\07-1117.00 - MERCER - CR 1225 OVER CHAPLAIN RIVER\FINAL\ADDENDUM002\SEPIA_014.DGN
 USER: chad.greenwell
 DATE PLOTTED: March 17, 2015
 E-SHEET NAME:
 MicroStation v8.11.7.180



SIDE VIEW FRONT VIEW SECTION A-A
 ~ W6 X 9.0 STEEL GUARDRAIL POST ~
 (USED WITH C6 X 8.2 RUB RAIL)

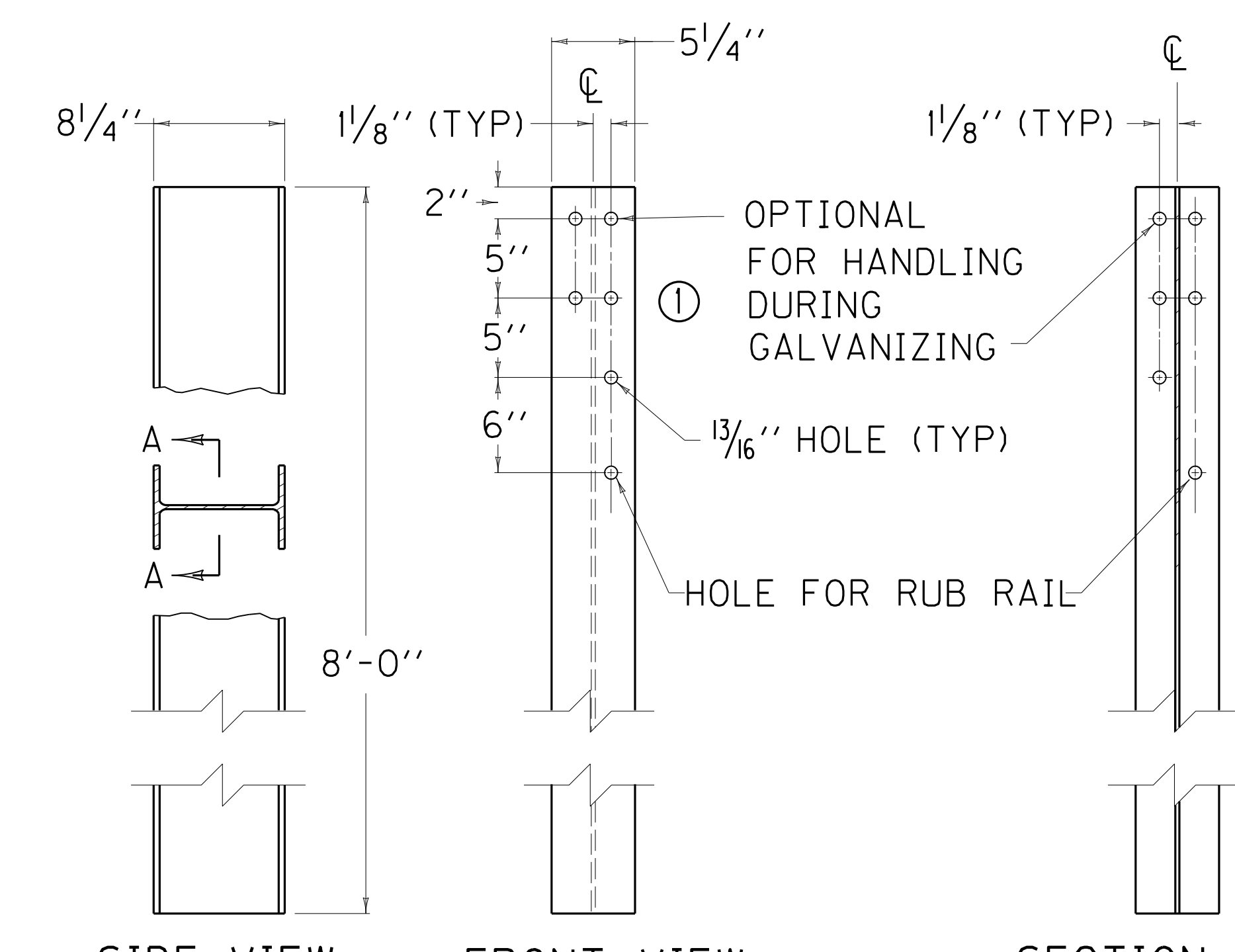


REAR ELEVATION



PLAN VIEW
 OFFSET BLOCK TYPE 6
 (TIMBER)

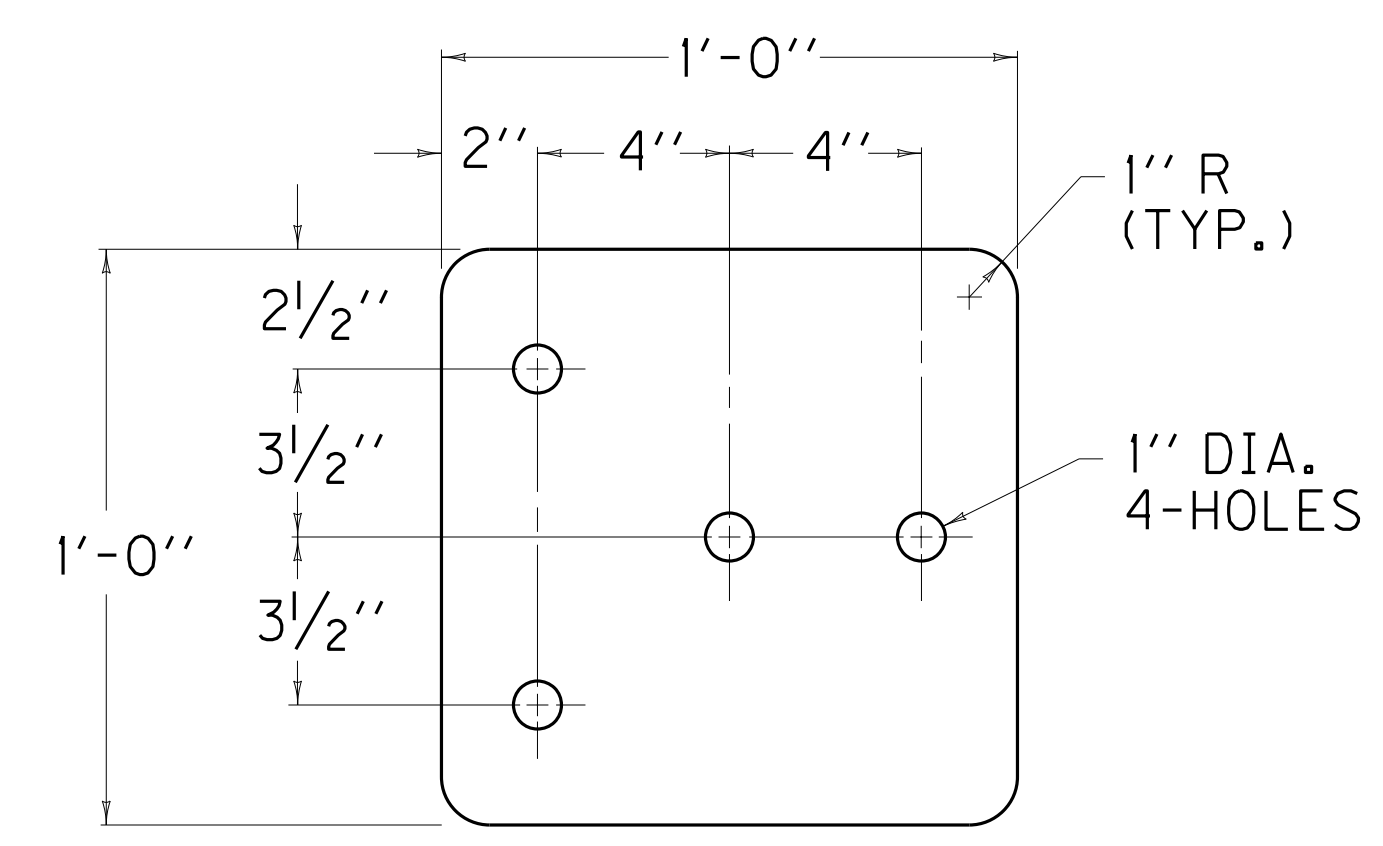
(FOR USE WITH W8 X 21 STEEL POST ONLY)



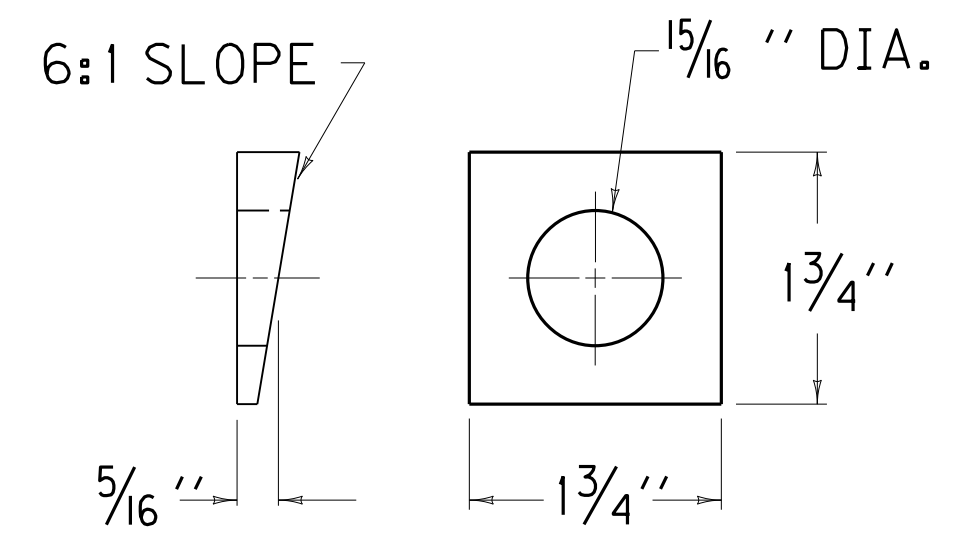
SIDE VIEW FRONT VIEW SECTION A-A
 ~ W8 X 21 STEEL GUARDRAIL POST ~

~ NOTES ~

① THESE HOLES REQUIRED FOR ATTACHING RAIL.



5/8" STEEL PLATE "A"



BEVELED WASHER

KENTUCKY
 DEPARTMENT OF HIGHWAYS
 GUARDRAIL CONNECTOR
 TO BRIDGE END
 TYPE A AND A-1
 COMPONENTS

SUBMITTED: *Jasper* 9-27-13
 DATE
 014

PROPOSAL BID ITEMS

151001

Page 1 of 2

Report Date 3/17/15

Section: 0001 - PAVING

LINE	BID CODE	ALT	DESCRIPTION	QUANTITY	UNIT	UNIT PRIC	FP	AMOUNT
0010	00001		DGA BASE	358.00	TON		\$	
0020	00221		CL2 ASPH BASE 0.75D PG64-22	438.00	TON		\$	
0030	00301		CL2 ASPH SURF 0.38D PG64-22	100.00	TON		\$	

Section: 0002 - ROADWAY

LINE	BID CODE	ALT	DESCRIPTION	QUANTITY	UNIT	UNIT PRIC	FP	AMOUNT
0031	01891		ISLAND HEADER CURB TYPE 2 (ADDED: 3-17-15)	100.00	LF		\$	
0040	02014		BARRICADE-TYPE III	2.00	EACH		\$	
0050	02091		REMOVE PAVEMENT	196.00	SQYD		\$	
0060	02200		ROADWAY EXCAVATION	2,607.00	CUYD		\$	
0070	02242		WATER	9.50	MGAL		\$	
0080	02351		GUARDRAIL-STEEL W BEAM-S FACE	50.00	LF		\$	
0090	02363		GUARDRAIL CONNECTOR TO BRIDGE END TY A (REVISED: 3-17-15)	4.00	EACH		\$	
0100	02360		GUARDRAIL TERMINAL SECTION NO 1	1.00	EACH		\$	
0110	02371		GUARDRAIL END TREATMENT TYPE 7	3.00	EACH		\$	
0120	02429		RIGHT-OF-WAY MONUMENT TYPE 1	9.00	EACH		\$	
0130	02432		WITNESS POST	9.00	EACH		\$	
0140	02483		CHANNEL LINING CLASS II	467.00	TON		\$	
0150	02545		CLEARING AND GRUBBING 2.21 ACRES	1.00	LS		\$	
0160	02562		TEMPORARY SIGNS	153.00	SQFT		\$	
0170	02650		MAINTAIN & CONTROL TRAFFIC	1.00	LS		\$	
0180	02701		TEMP SILT FENCE	2,544.00	LF		\$	
0190	02703		SILT TRAP TYPE A	2.00	EACH		\$	
0200	02704		SILT TRAP TYPE B	2.00	EACH		\$	
0210	02706		CLEAN SILT TRAP TYPE A	4.00	EACH		\$	
0220	02707		CLEAN SILT TRAP TYPE B	4.00	EACH		\$	
0230	02709		CLEAN TEMP SILT FENCE	5,088.00	LF		\$	
0240	02726		STAKING STAKING FOR 1000' ON ROLLING TERRAIN	1.00	LS		\$	
0250	02731		REMOVE STRUCTURE	1.00	LS		\$	
0260	05950		EROSION CONTROL BLANKET	358.00	SQYD		\$	
0270	05952		TEMP MULCH	10,681.00	SQYD		\$	
0280	05953		TEMP SEEDING AND PROTECTION	824.00	SQYD		\$	
0290	05963		INITIAL FERTILIZER	.24	TON		\$	
0300	05964		20-10-10 FERTILIZER	.40	TON		\$	
0310	05985		SEEDING AND PROTECTION	7,794.00	SQYD		\$	
0320	05989		SPECIAL SEEDING CROWN VETCH	443.00	SQYD		\$	
0330	05992		AGRICULTURAL LIMESTONE	5.00	TON		\$	

Section: 0003 - DRAINAGE

PROPOSAL BID ITEMS

151001

Page 2 of 2

Report Date 3/17/15

LINE	BID CODE	ALT	DESCRIPTION	QUANTITY	UNIT	UNIT PRIC	FP	AMOUNT
0340	00440		ENTRANCE PIPE-15 IN	56.00	LF		\$	
0350	00443		ENTRANCE PIPE-24 IN	28.00	LF		\$	
0360	00450		ENTRANCE PIPE-15 IN EQUIV	36.00	LF		\$	

Section: 0004 - BRIDGE

LINE	BID CODE	ALT	DESCRIPTION	QUANTITY	UNIT	UNIT PRIC	FP	AMOUNT
0370	02231		STRUCTURE GRANULAR BACKFILL	67.90	CUYD		\$	
0380	02998		MASONRY COATING	482.00	SQYD		\$	
0390	03299		ARMORED EDGE FOR CONCRETE	32.00	LF		\$	
0400	08001		STRUCTURE EXCAVATION-COMMON	224.60	CUYD		\$	
0410	08002		STRUCTURE EXCAV-SOLID ROCK	103.30	CUYD		\$	
0420	08019		CYCLOPEAN STONE RIP RAP	406.00	TON		\$	
0430	08033		TEST PILES	20.00	LF		\$	
0440	08046		PILES-STEEL HP12X53	50.00	LF		\$	
0450	08094		PILE POINTS-12 IN	4.00	EACH		\$	
0460	08100		CONCRETE-CLASS A	136.10	CUYD		\$	
0470	08104		CONCRETE-CLASS AA	172.30	CUYD		\$	
0480	08150		STEEL REINFORCEMENT	13,228.00	LB		\$	
0490	08151		STEEL REINFORCEMENT-EPOXY COATED	52,769.00	LB		\$	
0500	08634		PRECAST PC I BEAM TYPE 4	749.50	LF		\$	
0510	21532ED		RAIL SYSTEM TYPE III	506.00	LF		\$	

Section: 0005 - DEMOBILIZATION &/OR MOBILIZATION

LINE	BID CODE	ALT	DESCRIPTION	QUANTITY	UNIT	UNIT PRIC	FP	AMOUNT
0520	02569		DEMOBILIZATION	1.00	LS		\$	